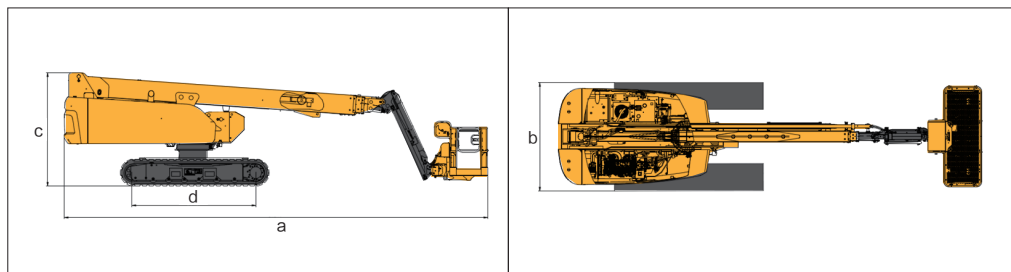


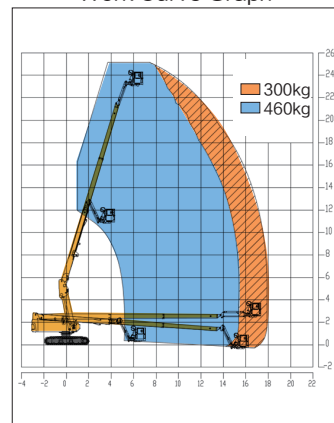


Parameter

Item		Unit	XGS25C
Dimension			
Overall dimension	Overall length	mm	10240mm
	Overall width	mm	2300/2820mm
	Overall height	mm	2720mm
Platform dimension	Length	mm	2440mm
	Width	mm	900mm
	Height	mm	1150mm
Wheelbase		mm	2940mm
Performance			
Max. working height		mm	24900
Max. platform height		mm	22900
Max. working range		mm	17900
Max. load capacity		kg	300kg(Unrestricted)/460kg (Restricted)
Boom luffing range		°	-4 ~ 73°
Rotation angle of turntable		°	360°
Tailswing of turntable		mm	2045/1785mm
Rotation angle of platform		°	160°
Vertical rotation of short boom – up		°	70°
Vertical rotation of short boom – down		°	65°
Overall weight		kg	13300kg
Travel speed (storage)		km/h	1.8 km/h
Travel speed (up or extension)		km/h	0.6 km/h
Min. turning radius (outside)		m	2.25m
Min. ground clearance		mm	320mm
Max. gradeability (counterweight upwards)		°	35° (19°)
Max. gradeability (counterweight downwards)		°	30° (17°)
Max. lateral driving slope		°	25° (14°)
Power source			
Tire specification			Steel track
Control			12V DC Proportional control
Engine model			Yuchai YCF3050–T423
Rated power		kW/(r/m)	36.8kW/(2400r/m)
Hydraulic tank capacity		L	165 L
Fuel tank capacity		L	180 L
Hydraulic system capacity		L	240 L



Work Curve Graph



Global service hotline: 400 110 9999

