



JOHN DEERE

# 300-SERIES

SKID STEERS

317 | 320 | 325 | 328 | 332



**317**  
57 net hp  
61 gross hp  
1,750-lb. rated operating capacity  
3,700-lb. tipping load



**320**  
62 net hp  
66 gross hp  
1,950-lb. rated operating capacity  
3,900-lb. tipping load



## Small wonders.

Talk about your overachievers — John Deere 300-Series Skid Steers are packed with features that help you get more done, more reliably, for less. Turbocharged four- and five-cylinder Tier 2-certified John Deere diesels deliver impressive power and torque. Precise low-effort standard controls and optional electrohydraulic joysticks (available on 325,

328, and 332) reduce operator fatigue. The overhead instrument panel includes a diagnostic monitor that gives operating info at a glance and sealed easy-to-operate switches for numerous functions. Options include a four-season cab with an enhanced air-conditioning system that cools more quickly and evenly. And a wide assortment of



**325**  
70 net hp  
76 gross hp  
2,500-lb. rated operating capacity  
5,000-lb. tipping load



**328**  
76 net hp  
82 gross hp  
2,750-lb. rated operating capacity  
5,500-lb. tipping load



**332**  
85 net hp  
91 gross hp  
3,175-lb. rated operating capacity  
6,350-lb. tipping load

Worksite Pro™ attachments for a wide variety of tasks. What's more, A/C is now available with high-flow hydraulics — so your operator can keep cool while running hydraulic-thirsty attachments. Add to that our industry-leading stability and visibility and wide-open service access, and these small-but-mighty machines will work wonders on almost any jobsite.

Opt for the available electrohydraulic joysticks on a 325, 328, or 332 and enjoy one-of-a-kind operating ease and control.

300-Series deliver best-in-class engine horsepower, peak torque, torque rise, breakout force, axle torque, balance, and pushing power.

Extended service intervals help maximize uptime.

Refined hydraulic valve metering provides enhanced control for finesse jobs like grading. Delivers faster loading cycles, too.

Need something smaller? Ask about the 313 and 315 small-frame radial-boom skid steers.

Impressive tipping load and rated operating capacities enable 300-Series Skid Steers to precisely place pallets and master an ever-changing variety of material-handling tasks.

Need a skid steer that's nimble and quick? Equip yours with an optional two-speed transmission for a 0–12-mph range that speeds up cycles.

Whatever you do, wherever you work — Deere skid steers will keep you on solid footing.



1



2



3



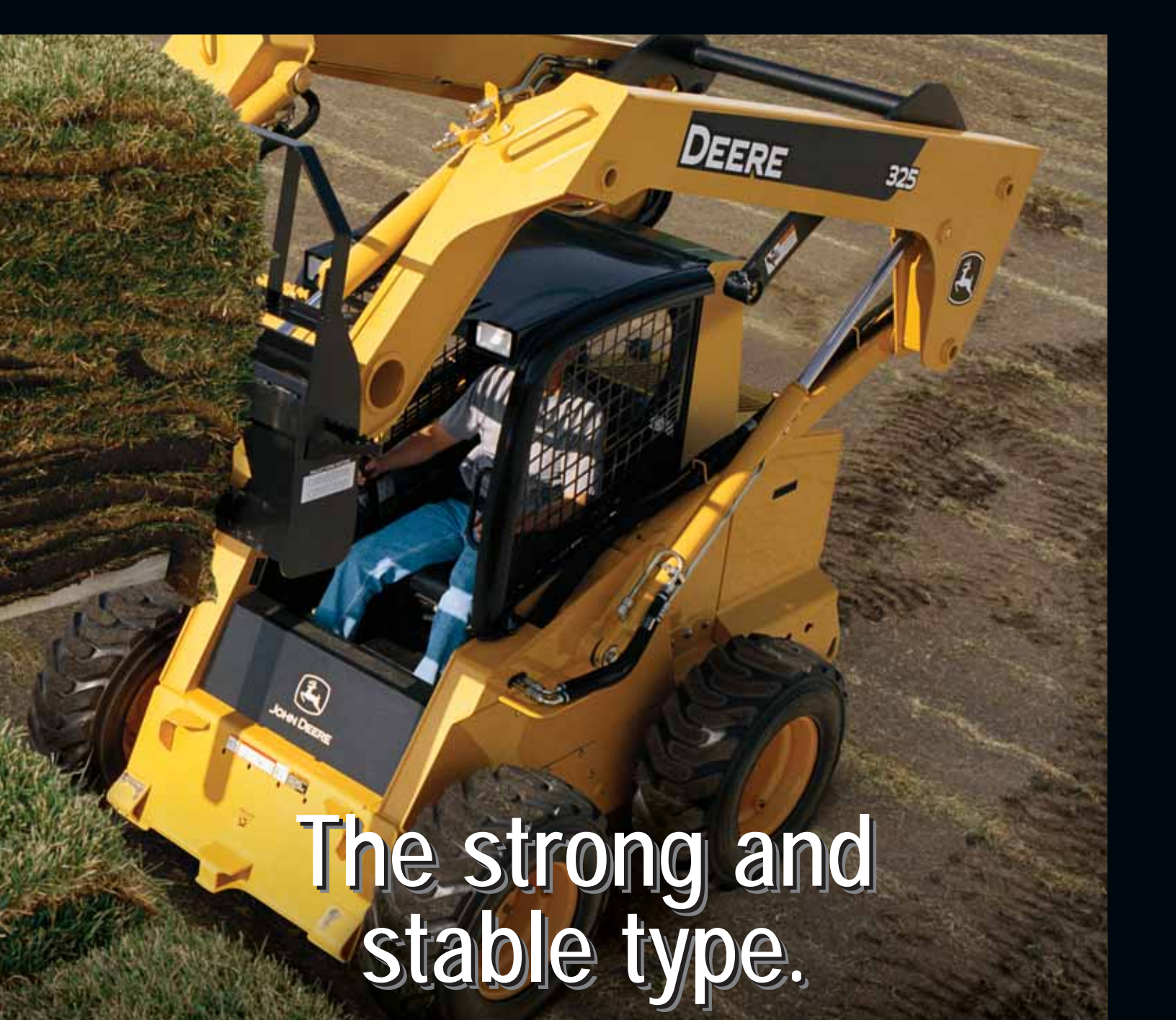
4



5

1. Some jobs are a real stretch for other skid steers. John Deere's innovative design enables you to clear high sideboards and even dump to the center of tandem-axle trucks.
2. With 35 degrees of rollback, big bucket loads are more likely to arrive at their intended destination — instead of somewhere in-between.
3. Forty-five-degree dump angle enables Worksite Pro™ buckets to empty more easily, so they shed even sticky materials.
4. Larger standard tires (up to 14 x 17.5 inches on the 328 and 332) offer better balance, traction, and flotation.
5. Say farewell to that all-too-familiar rocking-horse ride. John Deere skid steers are still the most stable, and with generous ground clearance, they'll go where others won't.

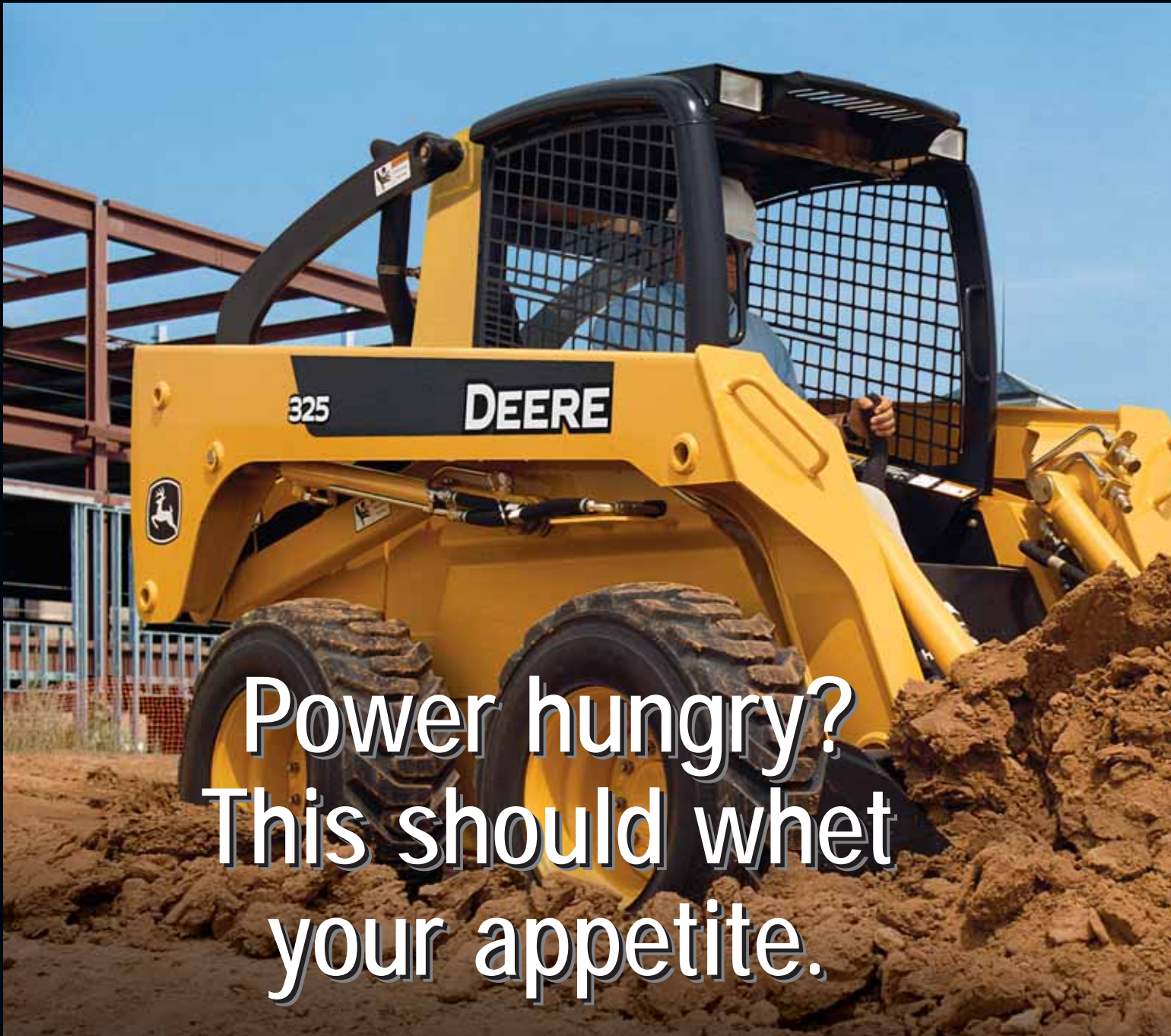




# The strong and stable type.

Want to be more productive? Climb aboard a skid steer that's more stable. With optimal 60/40-weight distribution, low center of gravity, high ground clearance, and long wheelbase, 300-Series Skid Steers deliver unsurpassed balance and agility, for smooth moves regardless of what's underfoot. But getting there is only half

the battle. The 300-Series also excel at putting material in its place. Their patented vertical-lift boom rises to the occasion, delivering exceptional lift height and reach. All critical measurements, including reach and height to the hinge pin, out-spec comparable-size skid steers. So you can do more, with less effort.



# Power hungry? This should whet your appetite.

Sure, the 300-Series' turbocharged four- and five-cylinder Deere diesels deliver more horsepower and torque. But that's not the only reason they outwork other skid steers. Their extra ability comes from a unified design that optimizes hydraulics, lift capabilities, and especially pushing forces. Large standard tires, exceptional axle torque, weight, and superior

balance give Deere skid steers the leverage to dig in where others just spin. And their direct-coupled high-torque Deere diesels won't take no for an answer, either. Horsepower, peak torque, torque rise, axle torque, and breakout force — the 300-Series top the charts in just about every category. For those who are power hungry, we say bon appétit.



Bucket breakout forces range from 5,500 lb. with the 317, to an impressive 11,600 lb. with the top-of-the-line 332.

Turbocharged Deere PowerTech™ diesels run smooth and quiet, and meet EPA Tier 2 non-road emissions regulations.



1



2



3



4

### 300-Series Skid Steer key specifications

	317	320	325	328	332
Gross HP	61	66	76	82	91
Torque Rise	31%	26%	35%	31%	47%
Hydraulic HP					
	<i>Standard Flow</i>	34 hp	38 hp	40 hp	40 hp
<i>Optional High Flow</i>	53 hp	61 hp	63 hp	67 hp	76 hp
Tipping Load	3,700 lb.	3,900 lb.	5,000 lb.	5,500 lb.	6,350 lb.
Rated Operating Capacity					
	<i>without Weights</i>	1,750 lb.	1,950 lb.	2,500 lb.	2,750 lb.
<i>with Weights</i>	2,100 lb.	2,300 lb.	2,850 lb.	3,100 lb.	3,525 lb.
Bucket Breakout	5,500 lb.	5,500 lb.	7,500 lb.	10,500 lb.	11,600 lb.
Standard Tire Size	10 x 16.5	12 x 16.5	12 x 16.5	14 x 17.5	14 x 17.5

1. New smooth-running, direct-injected diesel engines deliver significant torque rise and more usable power than other engines.

2. Best-in-class axle torque, larger standard tires, and impressive breakout force let you penetrate dirt piles more easily and fill the bucket fuller and faster.

3. Increased auxiliary flows provide the hydraulic horsepower needed to drive a wide variety of powered attachments.

4. With impressive torque reserves up to 47 percent, John Deere PowerTech diesels have the guts to deliver when the going gets tough.

Best-in-class visibility includes clear sightlines to the cutting edge, bucket corners, Quik-Tatch™ coupler, sides, rear corners, and directly behind.

Enhanced cab HVAC system delivers 37-percent more airflow; air conditioner gets 37-percent colder, 29-percent faster, too.

Low lever efforts, ergonomically correct adjustable armrests, and adjustable-angle pedals enhance control, comfort, and productivity.

Standard comfort features include interior dome light, beverage holder, cargo storage net, and 12-volt power port. Optional digital-coded antitheft system includes automatic end-of-day activation.



1. Monitor features easier-to-read graphics and selectable monitoring of vital machine functions such as engine rpm, battery voltage, engine coolant and hydraulic temperatures, diagnostic service codes, and more.

2. Available joystick controls (325, 328, and 332) deliver unsurpassed low-effort control that won't overreact to a bump in the road — or a first-time operator's unfamiliar touch.

3. For year-round comfort and climate control, add an optional four-season cab with heater, defroster, and air conditioner.

4. Convenient in-cab boom lock lets the operator secure the loader in an upright position before leaving the seat.

5. Comfortable, sculpted seat provides daylong comfort. Vinyl cover and shape sheds water. Seat belt automatically retracts.



You won't have to work hard to be productive with a John Deere skid steer. The industry's best 360-degree visibility takes the guess and work out of close-quarter maneuvering. You won't have to look hard to see the other operating advantages, either. Standard and optional deluxe suspension seats include adjustable ergonomically correct armrests for daylong support and comfort.



360°

# Work smarter, not harder.

Low-effort steering controls are smooth and responsive, as are boom and bucket functions. The enhanced overhead instrument panel includes an easy-to-view electronic monitor with diagnostic capability, and convenient, easy-to-operate sealed switches. We also went above and beyond to help you work more safely. Along with retractable seat belt and quick-pivot ROPS, you get a triple interlock

operator-presence system that automatically applies the brakes when the seat belt is unlatched, the operator leaves the seat, or the engine is shut down. An in-cab-activated boom lock keeps the loader arms upright when necessary. And slip-resistant self-cleaning steps and four convenient grab handles help ease entrance and exit. When you add it all up, the 300-Series look good from any angle.



# 110%. 24/7.

You put in long hours — and we designed the 300-Series to do just the same. Built in the same factory as our highly reliable crawlers and

backhoes, the 300-Series Skid Steers introduce a new level of uptime and durability. When you know how they're built, you'll run with a Deere.



High-strength final-drive chains are adjustment free.

O-ring face-seal hydraulic fittings virtually eliminate aggravating and costly oil leaks.

Wet-disc park brakes are fully enclosed and never require adjustment.

Engine oil-service intervals have been extended from 250 to 500 hours, so you can work longer between changes.

Automatic shutdown system monitors engine oil pressure, coolant, and hydraulic oil temperatures. An audible warning is issued when limits are exceeded, and if necessary, the machine is shut down to protect the drivetrain.



1. Cast axle housings and large one-piece forged and heat-treated shafts provide superior strength. A double-lip seal and wiper ring protect the tapered roller bearings.



2. Large cross-section boom arm design provides heavy-duty durability and strength.

3. Enhanced cooling system provides increased heat rejection for superior performance in extreme conditions.



4. Precision-joint connecting rods and rolled fillet crankshafts provide rugged engine durability and long life.

5. Switches and electrical connectors are sealed from moisture and dirt to help prevent corrosion.



Self-cleaning universal Quik-Tatch™ system fits all Worksite Pro™ and even some non-Deere attachments. An optional hydraulic-actuated version lets an operator hook up attachments without leaving the seat.

Auxiliary hydraulics with convenient flat-face quick-couplers come standard; high-flow available on every model.

Many Worksite Pro attachments are also compatible with John Deere compact excavators, the 244J Loader, and the 110 Tractor Loader Backhoe for even greater versatility.



1



2



3



4



5



6

### Available attachments

- Ag fork
- Augers
- Backhoes
- Bale spears
- Breakers
- Brooms (Angle/pickup)
- Buckets (Construction, foundry, multi-purpose utility, rock, tooth bar)
- Cold planers
- Grapples (Scrap, utility, tined)
- Landplanes
- Pallet forks (Pin, rail, heavy-duty)
- Power rakes
- Roller levels
- Rotary tillers
- Rubber and steel tracks
- Snow/utility blades
- Trenchers
- Vibratory rollers

### Attachments shown:

1. Roller
2. Tiller
3. Multi-purpose bucket
4. Power rake
5. Backhoe
6. Broom

A yellow John Deere skid steer loader is shown in a field of young plants. The loader is equipped with a trencher attachment, which is currently digging a trench in the soil. The loader's arm and bucket are visible, and the John Deere logo is clearly visible on the side. The background shows rows of young plants in a field, suggesting a nursery or agricultural setting.

# Instant rise in productivity. Just add attachments.

Want the versatility and increased productivity of several machines in one? Get hooked up to any of the many easy-to-use John Deere Worksite Pro™ attachments. Our ever-expanding lineup includes nearly 100 models, so you're sure to find the right tool for the job. The 300-

Series Skid Steers deliver plenty of standard hydraulic power — or optional high-flow — to power hydraulic-thirsty tools such as trenchers or cold planers. And with the universal, self-cleaning Quik-Tatch™ system, you can go from bucket to trencher in no time flat.

Swing open the rear door, lift the hood, remove the side shields, and tilt the operator station — it takes only minutes to get to the heart of a John Deere skid steer.

Maintenance-free battery and starter are easily accessible, boom up or down.

Daily checkpoints and refueling are convenient and quick.

Optional HVAC system mounts to the rear of the ROPS for convenient access. Doesn't obstruct visibility.

Rear-door-mounted oil cooler simplifies radiator and cooler cleanout.



# We're at your service with easy access.

If there's a way to reduce your daily operating costs and simplify even periodic maintenance, we've incorporated it. The oil cooler is mounted to the rear door, separating it from the radiator and providing convenient swing-out access for easier cleanout. Daily service points are just beneath the hinged top door, and removable side panels give way to no-mess vertical spin-on filters, a maintenance-free battery, and easy-

access air filter. If necessary, the operator station can be pivoted and secured in less than a minute, providing quick, wide-open access to the drive-train. And of course, industry-leading parts and service are just as easily accessible at John Deere skid steer dealer locations from coast to coast. Easy to work with, easy to maintain — that's John Deere 300-Series Skid Steers. See your John Deere dealer for a demo today.

1. Fuel tank and engine dipstick are easily accessible for quick daily servicing.

2. Serpentine belt and hydraulic valve lifters never require adjustment.

3. Sight gauge lets you check hydraulic fluid level at a glance.

4. 500-hour engine oil, 3-micron hydraulic, and 5-micron fuel filters provide extra protection. Vertical spin-on filters allow quick, no-mess fluid changes.

5. Environmental drains help prevent engine oil and coolant spills when changing.

6. With more than 1,100 service locations throughout North America, nobody backs you better.



# Specifications

Engine	317	320
Manufacturer and Model	John Deere PowerTech™ 4024T	John Deere PowerTech 4024T
Non-Road Emission Standards	certified to EPA Tier 2 emissions	certified to EPA Tier 2 emissions
Cylinders	4	4
Net Horsepower	57 net hp (42.5 kW)	62 net hp (46.2 kW)
Gross Horsepower	61 gross hp (45.5 kW)	66 gross hp (49.2 kW)
Displacement	149 cu. in. (2.4 L)	149 cu. in. (2.4 L)
Rated Engine Speed	2,800 rpm	2,800 rpm
Torque Rise	31%	26%
Aspiration	turbocharged	turbocharged
Air Cleaner	dry dual element	dry dual element

## Cooling

Engine Coolant Rating . . . . . -34 deg. F (-37 deg. C)

## Powertrain

Hydrostatic-manual; four 80 HD heavy-duty chain, continuous loop		
Single-Speed Travel Speeds	.0 to 6.8 mph (0 to 10.9 km/h)	0 to 6.8 mph (0 to 10.9 km/h)
<b>Axles</b>	induction-hardened, one-piece forged axle shafts with maintenance-free oil-bath lubrication of inner and outer axle bearings	induction-hardened, one-piece forged axle shafts with maintenance-free oil-bath lubrication of inner and outer axle bearings
Maximum Axle Torque	4,450 lb.-ft. (6052 Nm)	4,725 lb.-ft. (6426 Nm)
Tractive Effort	7,315 lbf (3318 kgf)	7,100 lbf (3220 kgf)
<b>Final Drive</b>	chains, high strength, adjustment free	chains, high strength, adjustment free
<b>Brakes</b>	integral, automatic, spring-applied, hydraulically released wet-disc park brake	integral, automatic, spring-applied, hydraulically released wet-disc park brake

## Hydraulics

Standard Pump Flow	17 gpm (64 L/m)	19 gpm (72 L/m)
Total Pump Flow with High-Flow Option	27 gpm (102 L/m)	31 gpm (117 L/m)
System Pressure at Couplers	3,450 psi (23 787 kPa)	3,450 psi (23 787 kPa)
Hydraulic Horsepower:		
Standard Flow (Calculated)	34 hp (25 kW)	38 hp (28 kW)
High Flow (Calculated)	53 hp (40 kW)	61 hp (45 kW)

## Electrical

317 / 320

Voltage	12 volt
Battery Capacity	.750 CCA (optional 925 CCA)
Alternator Rating	.70 amp
Lights	halogen, 2 front and 1 rear standard

## Tires/Wheels

317

320

Standard Tire Size	10 x 16.5 8 PR Extra Wall	12 x 16.5 10 PR SKS
--------------------	---------------------------	---------------------



## Serviceability

317 / 320

Serpentine belt and hydraulic valve lifters never require adjustment; operator station pivots for service access in minutes; rear-door-mounted oil cooler for easy radiator and cooler clean-out; boom lock in cab to secure loader before exiting operator seat; cooling system swing-out hydraulic oil cooler

**Diagnostics** .....computerized in-cab monitor information

**Sight Gauges** .....hydraulic reservoir

### Refill Capacities

Fuel Tank .....16 gal. (61 L)

Cooling System .....7 qt. (6.6 L)

Engine Oil with Filter .....9.5 qt. (9 L)

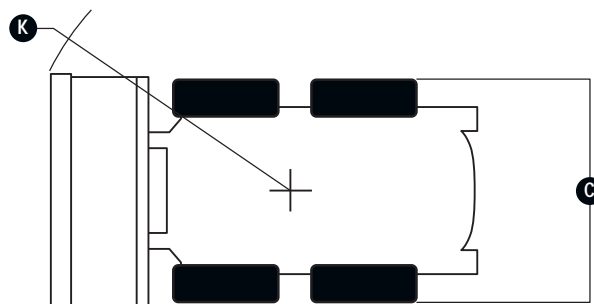
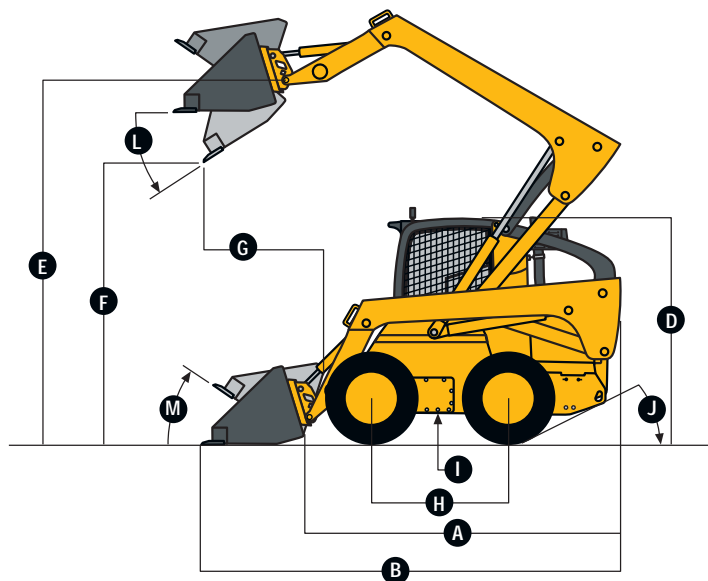
## Operating Weights

317

320

Base Machine .....6,300 lb. (2860 kg)

6,435 lb. (2921 kg)



## Machine Dimensions

317

320

- A** Length without Bucket .....8 ft. 6 in. (2.59 m)
- B** Length with Bucket .....10 ft. 6 in. (3.20 m)
- C** Width without Bucket .....5 ft. 3 in. (1.60 m)
- D** Height to Top of ROPS .....6 ft. 3 in. (1.92 m)
- E** Height to Hinge Pin .....9 ft. 6 in. (2.90 m)
- F** Dump Height .....7 ft. 5 in. (2.26 m)
- G** Dump Reach:
  - Foundry Bucket .....29.1 in. (739 mm)
  - Construction Bucket .....3 ft. 0 in. (0.91 m)
- H** Wheelbase .....3 ft. 6 in. (1.07 m)
- I** Ground Clearance .....8.2 in. (208 mm)
- J** Angle of Departure .....27 deg.
- K** Front Turn Radius .....6 ft. 7 in. (2.00 m)
- L** Dump Angle (at full lift height) .....45 deg.
- M** Bucket Rollback (at ground level) .....35 deg.

- 8 ft. 6 in. (2.59 m)
- 10 ft. 6 in. (3.20 m)
- 5 ft. 10 in. (1.77 m)
- 6 ft. 5 in. (1.95 m)
- 9 ft. 7 in. (2.93 m)
- 7 ft. 6 in. (2.29 m)
- 28.1 in. (714 mm)
- 35 in. (889 mm)
- 42.3 in. (1.07 m)
- 9.6 in. (244 mm)
- 27 deg.
- 6 ft. 7 in. (2.00 m)
- 45 deg.
- 35 deg.

## Loader Performance

- Tipping Load .....3,700 lb. (1680 kg)
- SAE Rated Operating Capacity .....1,750 lb. (795 kg)
- Rated Operating Capacity with Counterweight .....2,100 lb. (953 kg)
- Boom Breakout .....3,100 lb. (1407 kg)
- Bucket Breakout Force:
  - Foundry Bucket .....5,500 lb. (2497 kg)
  - Construction Bucket .....3,900 lb. (1771 kg)

- 3,900 lb. (1771 kg)
- 1,950 lb. (885 kg)
- 2,300 lb. (1044 kg)
- 3,100 lb. (1407 kg)
- 5,500 lb. (2497 kg)
- 3,900 lb. (1771 kg)

# Specifications

Engine	325	328	332
Manufacturer and Model	John Deere PowerTech™ 5030T	John Deere PowerTech 5030Tw	John Deere PowerTech 5030Hw
Non-Road Emission Standards	certified to EPA Tier 2 emissions	certified to EPA Tier 2 emissions	certified to EPA Tier 2 emissions
Cylinders	5	5	5
Net Horsepower	70 net hp (52.2 kW)	76 net hp (56.7 kW)	85 net hp (63.4 kW)
Gross Horsepower	76 gross hp (56.7 kW)	82 gross hp (61.1 kW)	91 gross hp (67.9 kW)
Displacement	186 cu. in. (3.0 L)	186 cu. in. (3.0 L)	186 cu. in. (3.0 L)
Rated Engine Speed	2,800 rpm	2,800 rpm	2,800 rpm
Torque Rise	35%	31%	47%
Aspiration	turbocharged	turbocharged	turbocharged, intercooled
Air Cleaner	dry dual element	dry dual element	dry dual element

## Cooling

Engine Coolant Rating . . . . . -34 deg. F (-37 deg. C)

## Powertrain

Standard manual hydrostatic-servo controls; optional electrohydraulic joystick control; four 100 HD heavy-duty chain, continuous loop

Travel Speeds:

Single Speed	0 to 7.0 mph (0 to 11.3 km/h)	0 to 7.0 mph (0 to 11.3 km/h)	0 to 7.0 mph (0 to 11.3 km/h)
Two Speed:			
Low	0 to 6.0 mph (0 to 9.7 km/h)	0 to 7.0 mph (0 to 11.3 km/h)	0 to 6.6 mph (0 to 10.6 km/h)
High	0 to 11.0 mph (0 to 17.7 km/h)	0 to 12.0 mph (0 to 19.3 km/h)	0 to 11.2 mph (0 to 18 km/h)

<b>Axles</b>	induction-hardened, one-piece forged axle shafts with maintenance-free oil-bath lubrication of inner and outer axle bearings	induction-hardened, one-piece forged axle shafts with maintenance-free oil-bath lubrication of inner and outer axle bearings	induction-hardened, one-piece forged axle shafts with maintenance-free oil-bath lubrication of inner and outer axle bearings
Maximum Axle Torque	5,680 lb.-ft. (7725 Nm)	6,235 lb.-ft. (8480 Nm)	6,930 lb.-ft. (9425 Nm)
Tractive Effort	8,725 lbf (3958 kgf)	8,610 lbf (3905 kgf)	9,430 lbf (4277 kgf)
<b>Final Drive</b>	chains, high strength, adjustment free	chains, high strength, adjustment free	chains, high strength, adjustment free
<b>Brakes</b>	spring-applied, hydraulically released wet-disc park brake	spring-applied, hydraulically released wet-disc park brake	spring-applied, hydraulically released wet-disc park brake

## Hydraulics

Standard Pump Flow	22 gpm (83 L/m)	22 gpm (83 L/m)	24 gpm (91 L/m)
Total Pump Flow with High-Flow Option	34 gpm (129 L/m)	36 gpm (136 L/m)	41 gpm (155 L/m)
System Pressure at Couplers	3,100 psi (21 374 kPa)	3,100 psi (21 374 kPa)	3,100 psi (21 374 kPa)
Hydraulic Horsepower:			
Standard Flow (Calculated)	40 hp (30 kW)	40 hp (30 kW)	43 hp (32 kW)
High Flow (Calculated)	63 hp (47 kW)	67 hp (50 kW)	76 hp (57 kW)

## Electrical

### 325 / 328 / 332

Voltage	12 volt
Battery Capacity	925 CCA
Alternator Rating	70 amp
<b>Lights</b>	halogen, 2 front and 1 rear standard

## Tires/Wheels

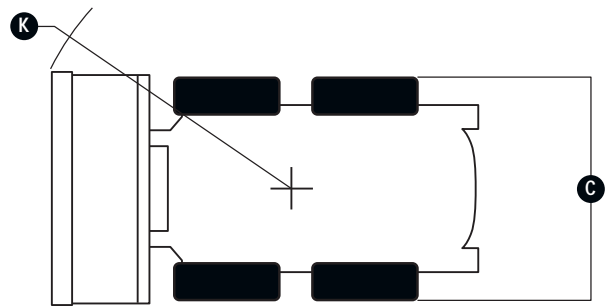
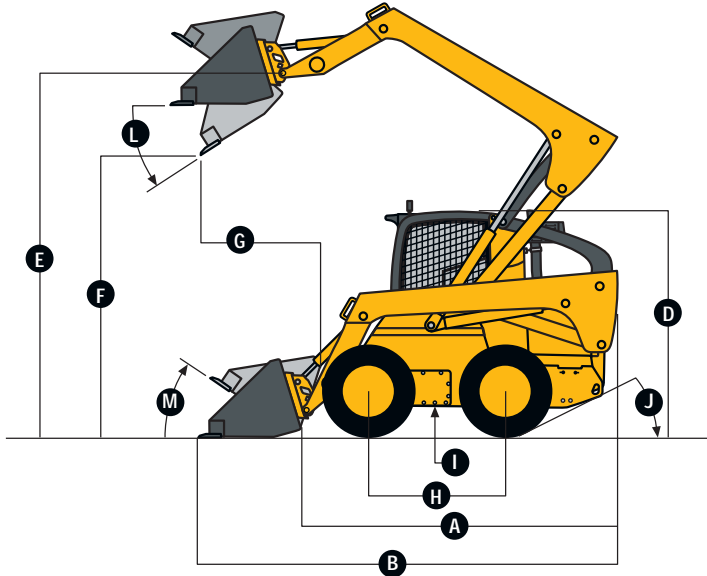
### 325

### 328

### 332

Standard Tire Size	12 x 16.5 8 PR SKS	14 x 17.5 12 PR Extra Wall	14 x 17.5 14 PR Hauler
--------------------	--------------------	----------------------------	------------------------

Serviceability	325	328	332
Serpentine belt and hydraulic valve lifters never require adjustment; operator station pivots for service access in minutes; rear-door-mounted oil cooler for easy radiator and cooler clean-out; boom lock in cab to secure loader before exiting operator seat; cooling system swing-out hydraulic oil cooler			
<b>Diagnostics</b> . . . . .	computerized in-cab monitor information		
<b>Sight Gauges</b> . . . . .	hydraulic reservoir		
<b>Refill Capacities</b>			
Fuel Tank . . . . .	24 gal. (90.8 L)	24 gal. (90.8 L)	24 gal. (90.8 L)
Cooling System . . . . .	10 qt. (9.5 L)	10 qt. (9.5 L)	3.4 gal. (12.9 L)
Engine Oil with Filter . . . . .	12.5 qt. (11.8 L)	12.5 qt. (11.8 L)	12.5 qt. (11.8 L)
<b>Operating Weights</b>			
Base Machine . . . . .	8,390 lb. (3809 kg)	8,580 lb. (3895 kg)	9,160 lb. (4159 kg)



Machine Dimensions	325	328	332
<b>A</b> Length without Bucket . . . . .	9 ft. 8 in. (2.93 m)	9 ft. 8 in. (2.93 m)	9 ft. 8 in. (2.93 m)
<b>B</b> Length with Bucket . . . . .	11 ft. 7 in. (3.52 m)	11 ft. 7 in. (3.52 m)	11 ft. 7 in. (3.52 m)
<b>C</b> Width without Bucket . . . . .	6 ft. 2 in. (1.87 m)	6 ft. 4 in. (1.93 m)	6 ft. 5 in. (1.96 m)
<b>D</b> Height to ROPS . . . . .	6 ft. 9 in. (2.05 m)	6 ft. 11 in. (2.11 m)	6 ft. 11 in. (2.11 m)
<b>E</b> Height to Hinge Pin . . . . .	10 ft. 5 in. (3.18 m)	10 ft. 7 in. (3.23 m)	10 ft. 7 in. (3.23 m)
<b>F</b> Dump Height . . . . .	8 ft. 4 in. (2.54 m)	8 ft. 6 in. (2.59 m)	8 ft. 6 in. (2.59 m)
<b>G</b> Dump Reach:			
Foundry Bucket . . . . .	34 in. (864 mm)	32 in. (813 mm)	32 in. (813 mm)
Construction Bucket . . . . .	31 in. (787 mm)	39 in. (991 mm)	39 in. (991 mm)
<b>H</b> Wheelbase . . . . .	4 ft. 0 in. (1.21 m)	4 ft. 0 in. (1.21 m)	4 ft. 1 in. (1.23 m)
<b>I</b> Ground Clearance . . . . .	9 in. (229 mm)	11 in. (279 mm)	9.5 in. (241 mm)
<b>J</b> Angle of Departure . . . . .	27 deg.	27 deg.	27 deg.
<b>K</b> Front Turn Radius . . . . .	7 ft. 0 in. (2.13 m)	7 ft. 0 in. (2.13 m)	7 ft. 0 in. (2.13 m)
<b>L</b> Dump Angle (at full lift height) . . . . .	45 deg.	45 deg.	45 deg.
<b>M</b> Bucket Rollback (at ground level) . . . . .	35 deg.	35 deg.	35 deg.

Loader Performance	325	328	332
Tipping Load . . . . .	5,000 lb. (2270 kg)	5,500 lb. (2497 kg)	6,350 lb. (2883 kg)
SAE Rated Operating Capacity . . . . .	2,500 lb. (1135 kg)	2,750 lb. (1249 kg)	3,175 lb. (1441 kg)
Rated Operating Capacity with Counterweight . . . . .	2,850 lb. (1294 kg)	3,100 lb. (1407 kg)	3,525 lb. (1600 kg)
Boom Breakout . . . . .	4,800 lb. (2179 kg)	4,800 lb. (2179 kg)	6,650 lb. (3019 kg)
Bucket Breakout Force:			
Foundry Bucket . . . . .	7,500 lb. (3405 kg)	10,500 lb. (4767 kg)	11,600 lb. (5266 kg)
Construction Bucket . . . . .	5,300 lb. (2406 kg)	7,430 lb. (3373 kg)	8,210 lb. (3727 kg)

## 317 / 320 / 325 / 328 / 332 SKID STEER LOADERS

**Key:** ● Standard equipment ▲ Optional or special equipment

See your John Deere dealer for further information.

### 317 320 325 328 332 Engine

- ● ● ● ● Certified to EPA Tier 2 emissions
- ● John Deere 250 Series PowerTech™ turbocharged four-cylinder engine
- ● ● John Deere 250 Series PowerTech turbocharged and aftercooled five-cylinder engine
- ● ● Automatic fan-belt tensioner
- ● ● Automatic preheat
- ● ● John Deere COOL-GARD® Extended-Life Engine Coolant
- ● ● John Deere Plus-50® 10w30 initial engine oil fill\*
- ● ● ● Five-micron primary fuel filter and water separator
- ▲ ▲ ▲ ▲ ▲ Block heater

### Cooling System

- ● ● ● ● Coolant recovery tank
- ● ● ● ● Enhanced cooling system
- ● ● ● ● Swing-out hydraulic oil cooler

### Powertrain

- ● ● ● ● High-strength adjustment-free final-drive chains
- ● ● ● ● Spring-applied hydraulically released wet-disk park brake
- ● ● ● ● Wet-disk brakes
- ▲ ▲ ▲ Transmission, 2-speed

### Hydraulic System

- ● ● ● ● John Deere hydraulic cylinders with cushioned boom cylinders
- ● ● ● ● Quick-check hydraulic fluid level sight glass
- ● ● ● ● Three-micron hydraulic filter
- ▲ ▲ ▲ ▲ ▲ High-flow hydraulics

### Electrical

- ● ● ● ● Automatic shutdown with alarm
- ● ● ● ● Auxiliary hydraulics operator-presence system

### 317 320 325 328 332 Electrical (cont.)

- ● ● ● ● Deluxe instrumentation EMU with: Operator selectable monitoring – Hour meter, engine rpm, battery voltage, diagnostics, EMU configuration, engine coolant temperature, hydraulic oil temperature
- LED warning indicators – Glow plug, seat switch, seat belt, door open, auxiliary hydraulics, park brake engaged, two speed engaged, stop, low engine oil pressure, engine coolant over-temperature, battery not charging, air filter restriction, hydraulic filter restriction
- ● ● ● ● Front and rear halogen work lights
- ● ● ● ● Triple interlock operator-presence control system
- ▲ ▲ ▲ ▲ ▲ Backup alarm
- ▲ ▲ Battery, 925 cca
- ▲ ▲ ▲ ▲ ▲ Dual flashers
- ▲ ▲ ▲ ▲ ▲ Handle kit, 8-button
- ▲ ▲ ▲ ▲ ▲ Horn
- ▲ ▲ ▲ ▲ ▲ Warning beacon kit

### Operator's Station

- ● ● ● ● Adjustable armrests
- ● ● ● ● Adjustable foot pedals
- ● ● ● ● 12-volt power port / Dome light / Cargo net / Beverage holder
- ● ● ● ● Grab handles (4)
- ● ● ● ● Headliner
- ● ● ● ● Quick-pivot ROPS
- ● ● ● ● Rear window
- ● ● ● ● ROPS/FOPS operator structure
- ● ● ● ● Seat belt with auto recoil
- ● ● ● ● Water-shedding deluxe vinyl seat

### 317 320 325 328 332 Operator's Station (cont.)

- ▲ ▲ ▲ ▲ ▲ Acoustical noise-suppression package
- ▲ ▲ ▲ ▲ ▲ Air conditioning with heater/defroster
- ▲ ▲ ▲ ▲ ▲ Cab enclosure
- ▲ ▲ ▲ ▲ ▲ Demolition door
- ▲ ▲ ▲ ▲ ▲ Electrohydraulic joystick controls
- ▲ ▲ ▲ ▲ ▲ Floor cover plates
- ▲ ▲ ▲ ▲ ▲ Hand controls
- ▲ ▲ ▲ ▲ ▲ Heater/defroster
- ▲ ▲ ▲ ▲ ▲ Rearview mirror kit
- ▲ ▲ ▲ ▲ ▲ Seat belt, 3-in.
- ▲ ▲ ▲ ▲ ▲ Shoulder belt
- ▲ ▲ ▲ ▲ ▲ Side window kit
- ▲ ▲ ▲ ▲ ▲ Suspension seat
- ▲ ▲ ▲ ▲ ▲ Top window
- ▲ ▲ ▲ ▲ ▲ Vinyl cab enclosure kit

### Loader

- ● ● ● ● Integral cab boom lock
- ● ● ● ● Patented John Deere Quik-Tatch™
- ● ● ● ● Patented John Deere vertical-lift boom with superior visibility
- ▲ ▲ ▲ ▲ ▲ Hydraulic self-leveling
- ▲ ▲ ▲ ▲ ▲ Power Quik-Tatch

### Other

- ● ● ● ● Convenient front and rear tie downs
- ● ● ● ● Environmental drains for all fluid reservoirs
- ▲ ▲ ▲ ▲ ▲ Antitheft system
- ▲ ▲ ▲ ▲ ▲ Chrome exhaust stack
- ▲ ▲ ▲ ▲ ▲ Quik-Tatch weights
- ▲ ▲ ▲ ▲ ▲ Rear weight brackets
- ▲ ▲ ▲ ▲ ▲ Single-point lift kit
- ▲ ▲ ▲ ▲ ▲ SMV sign kit
- ▲ ▲ ▲ ▲ ▲ Spare tire and wheel
- ▲ ▲ ▲ ▲ ▲ Tire options: Flotation / Foam filled / Solid / Heavy duty

\*500-hour engine oil change intervals when John Deere Plus-50 oil and John Deere oil filter are used.

## CONTROL OWNING AND OPERATING COSTS

Customer Personal Service (CPS) is part of John Deere's proactive, fix-before-fail strategy on machine maintenance that will help control costs, increase profits, and reduce stress. Included in this comprehensive lineup of ongoing programs and services are:

**Fluid analysis program** – tells you what's going on inside *all* of your machine's major components so you'll know if there's a problem *before* you see a decline in performance. Fluid analysis is included in most extended coverage and preventive-maintenance agreements.

**Preventive Maintenance (PM) agreements** – give you a fixed cost for maintaining a machine for a given period of time. They also help you avoid downtime by ensuring that critical maintenance work gets done right and on schedule. On-site preventive maintenance service performed where and when you need it helps protect you from the expense of catastrophic failures and lets you avoid waste-disposal hassles.

**Extended warranty coverage** – gives you a fixed cost for machine repairs for a given period of time so you can effectively manage expenses. Whether you work in a severe-service setting, or you just want to spread the risk of doing business, this is a great way to custom-fit coverage to your operation. Choose from engine, powertrain, powertrain with hydraulics, or full-machine two-year/2,000-hour or three-year/3,000-hour coverage. An extended coverage contract travels well because it's backed by John Deere and honored at all John Deere Commercial Worksite Products dealers. What's more, extended coverage is fully transferable at no extra charge, so it adds value at trade-in.

**Customer Support Advisors (CSAs)** – Deere believes the CSA program lends a *personal* quality to Customer Personal Service (CPS). Certified CSAs have the knowledge and skills for helping make important decisions on machine maintenance and repair. Their mission is to help you implement a plan that's right for *your* business and take the burden of machine maintenance off your shoulders.



JOHN DEERE

Net engine power is with standard equipment including air cleaner, exhaust system, alternator, and cooling fan, at standard conditions per SAE J1349 and DIN 6270B, using No. 2-D fuel at 35 API gravity. Gross power is without cooling fan.

Specifications and design subject to change without notice. Wherever applicable, specifications are in accordance with SAE standards. Except where otherwise noted, these specifications are based on units with standard equipment, full fuel tanks, and 175-lb. (79 kg) operator.

