

Crawler-Mounted Aerial Platform

HX99B

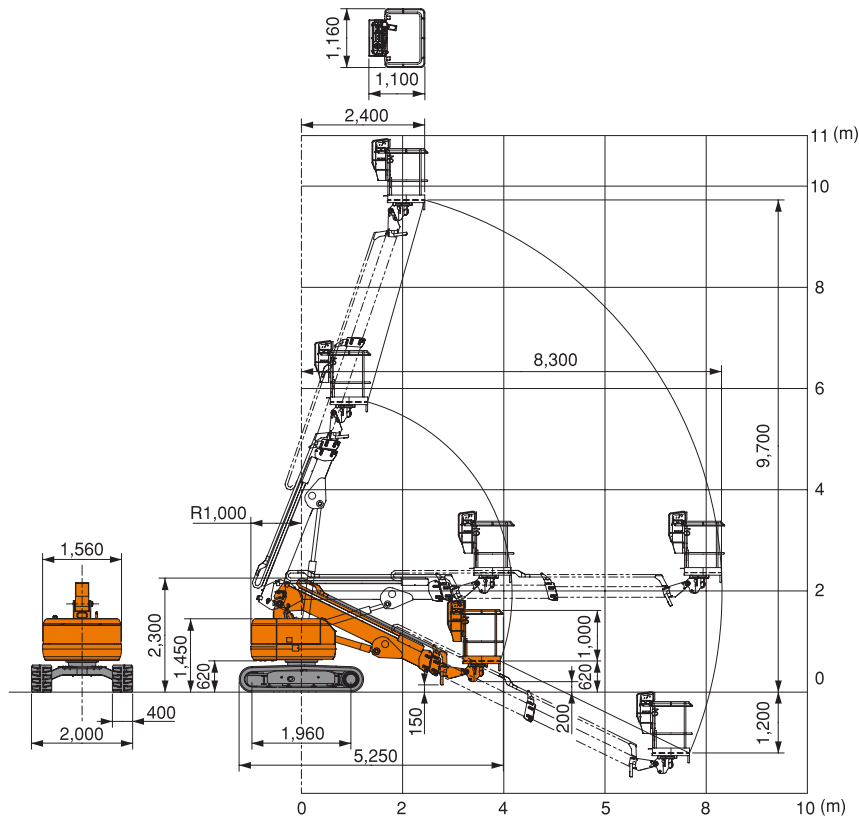
**9.7m High Lift with
Small Turning Radius**

**Easy High-Lift Operation
with Safety Features**

Upperstructure
counterweight turning
radius is a mere 1m.

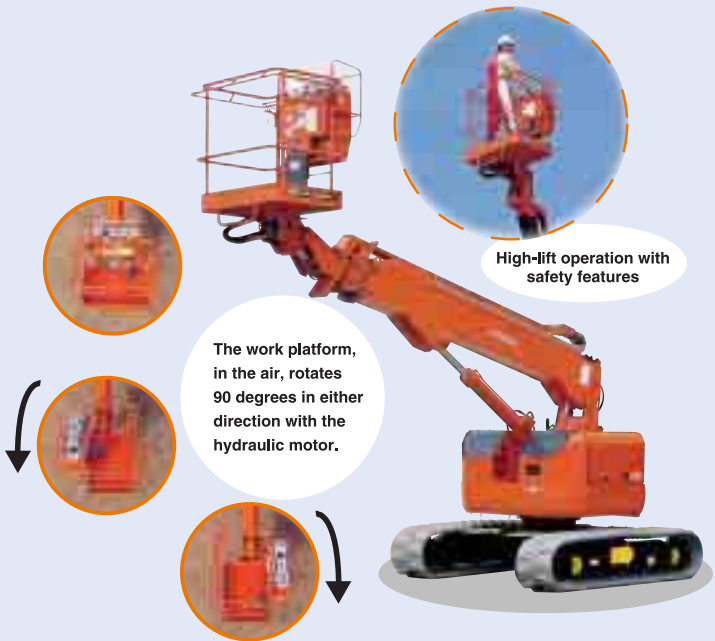
- Low exhaust gas emissions.
- Daily maintenance and servicing can be done on the engine room side.
- Low noise design.
- Compact dimensions and small rear-end swing radius allows entry into tight work sites.
- Excellent inching control provided by pilot hydraulic control system.

HITACHI



■ Specifications

Model		HX99B
Work platform height	mm	9 700
Working reach	mm	8 300
Platform capacity	kg	200
Work platform turning angle	degree	90 (either direction)
Machine weight	kg	5 400
Speeds		
Boom raise/lower	degree/s	-26 to 68/raise 40, lower 44
Boom extend/retract	m/s	extend : 8.3/20, retract : 8.3/20
Swing	min ⁻¹ (rpm)	0.8 (0.8)
Travel	km/h	high : 1.8, low : 1.1
Work platform turn	degree/s	90/7.5
Engine		
Model		Kubota D1105-KB
Type		Water-cooled, 3-cylinder swirl combustion chamber type diesel engine
Rated flywheel horsepower	kW/min ⁻¹ (PS/rpm)	9.2/1 650 (12.5/1 650)
Service refill capacities		
Fuel tank	L	66
Hydraulic oil tank	L	67



These specifications are subject to change without notice.
Illustrations and photos show the standard models, and may or may not include optional equipment, accessories, and all standard equipment with some differences in color and features.

⊗ Hitachi Construction Machinery Co., Ltd.

Head Office: 5-1 Koraku 2-chome, Bunkyo-ku,
Tokyo 112-8563, Japan

Telephone: (03)3830-8050

Facsimile: (03)3830-8204