

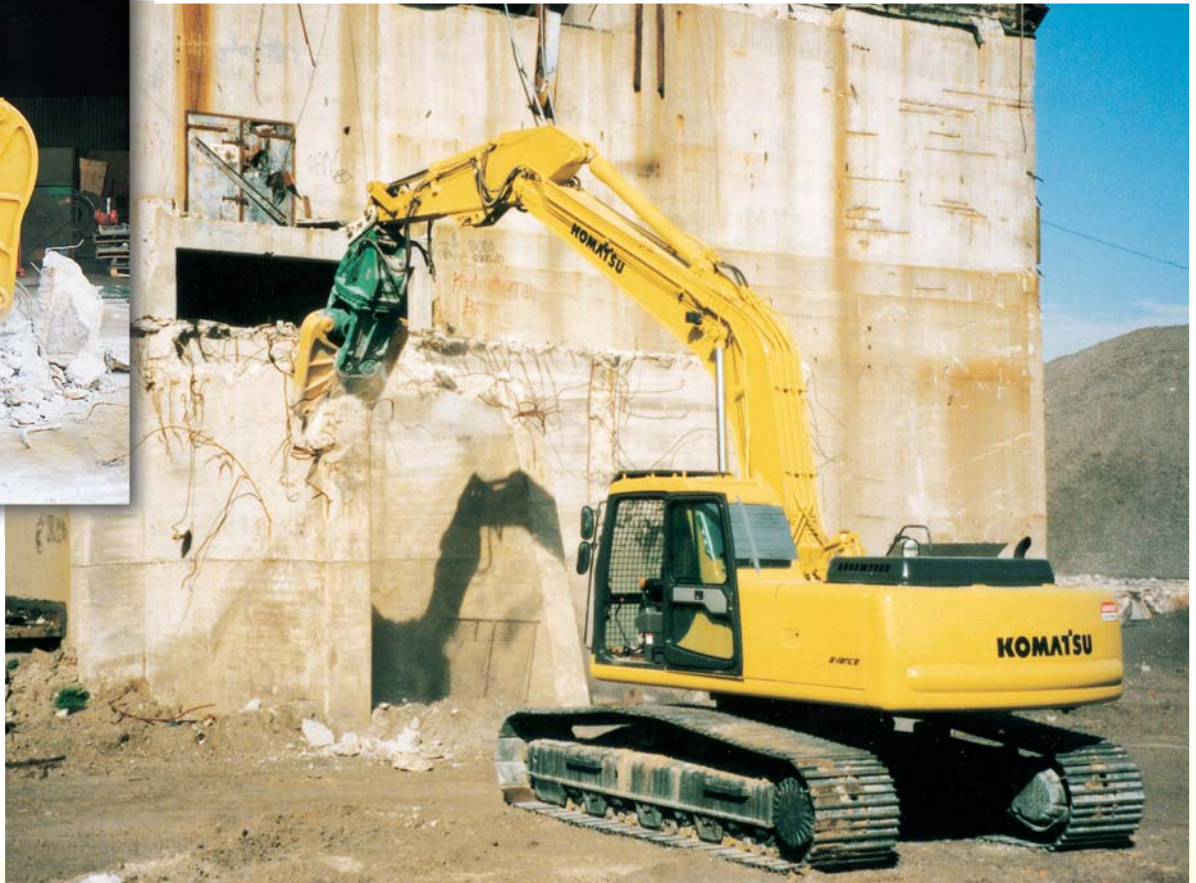
# CRUSHER & CUTTER

**PC200** with Demolition specifications  
**PC300**

Demolition High Reach of **PC300LC & PC400LC**



Photo showing is JCYC19R with short cutters and smashing points.



JCYC17R for primary concrete crushing & steel cutting

## Three functions in one unit !

The advent of crusher and cutter capable of crushing concrete structures, cutting steel frames and splitting a concrete block into small pieces.

- Three functions in one unit  
An all-purpose machine with dual functions by long and short cutters plus scantling
- Cutting specifications  
The cutter can cut even H beam steel and piping.  
Long cutter length: 500 mm (JCYC19/19R) , 420 mm (JCYC17/17R)
- Crushing specifications  
Front-end teeth and middle teeth crush concrete structure, while a short cutter cuts reinforcing bars.  
Short cutter length: 300 mm (JCYC19/19R) , 180 mm (JCYC17/17R)
- Scantling specifications  
They are most effective with splitting a concrete block into scantlings and separating reinforcing bars.
- Two rotation types  
360° none hydraulic rotation with a brake and 360° hydraulic rotation.
- Synchronous arm movement  
As two arms move symmetrically with a synchronous pin in their center, they can easily grab target objects, thus assuring work of high efficiency.
- Close shutting  
The front-end arms close as tightly as zero clearance. This feature enables the crusher and cutter to do various kinds of work such as grasping things. In addition, it can easily deal with a thin wall when crushing it.

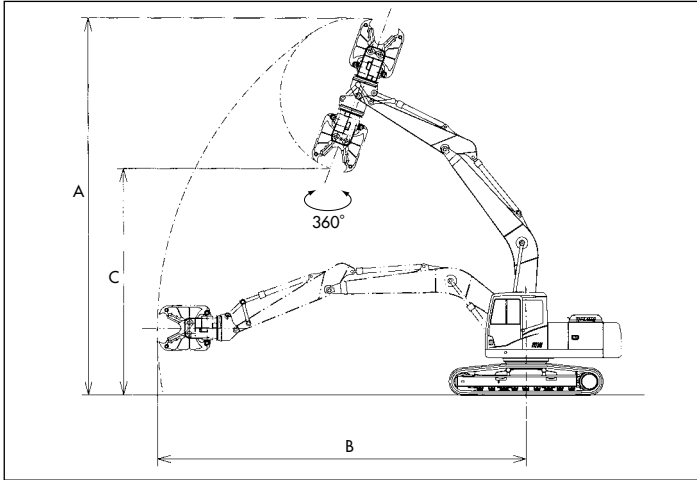


Working Gear

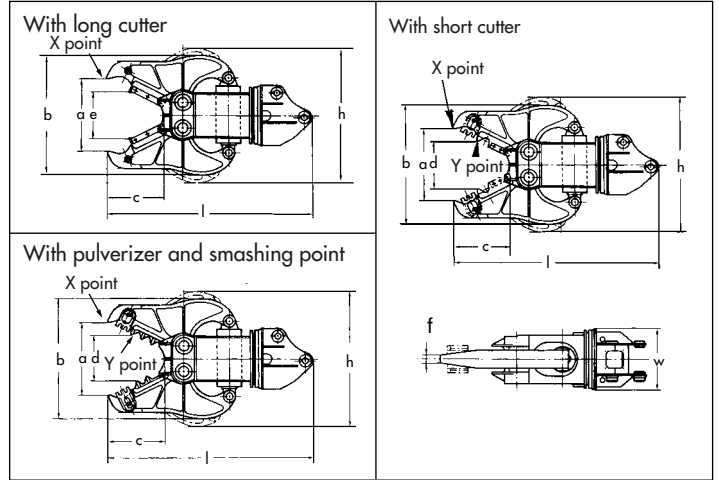
**PC 200** with Demolition specifications  
**PC 300**  
 Demolition High Reach of  
**PC300LC&PC400LC**

# CRUSHER & CUTTER

## Working Range Diagram



## Outside Drawing

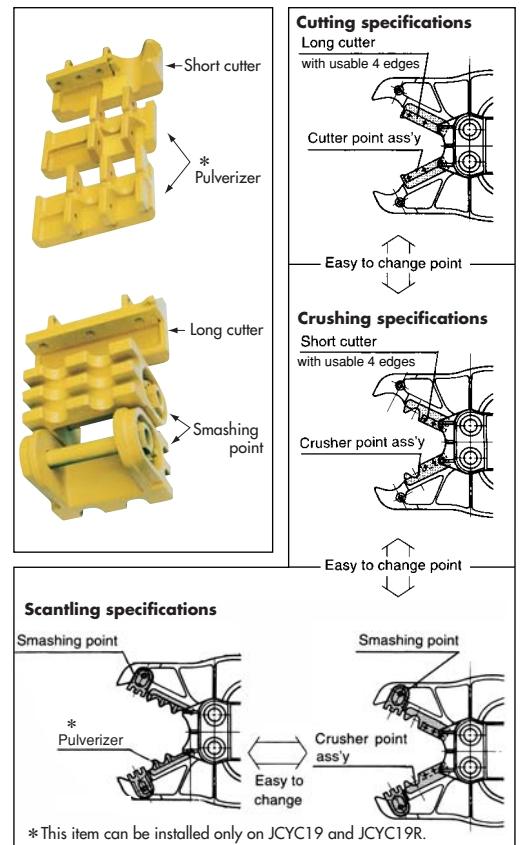


## Specifications

Specifications		Model	PC200-7 Demolition specifications		PC300-7	
Crusher and Cutter Model			JCYC17	JCYC17R	JCYC19	JCYC19R
Crusher & Cutter Rotation Mechanism			360° None Hydraulic Rotation	360° Hydraulic Rotation	360° None Hydraulic Rotation	360° Hydraulic Rotation
Operating Weight(with long cutter)		kg/lb	23070/50860	23120/50970	32910/72550	33060/72880
Engine Model		PS/HP(kW)/RPI	KOMATSU SAA6D102E		KOMATSU SAA6D114E	
Flywheel Horsepower			145/143(107)/1950		245/242(180)/1900	
Crushing Force (at X portion)		kN/ton(U.S.ton)	980/100(110)		1196/122(135)	
Crushing Force (at Y portion)		kN/ton(U.S.ton)	1470/150(165)		1764/180(198)	
Crusher & Cutter dimensions and performance	a. Max. open width (at X portion)	mm/ft.in	820/2'8"		1020/3'4"	
	b. Max. open height	mm/ft.in	1300/4'3"		1680/5'6"	
	c. Open depth	mm/ft.in	650/2'2"		800/2'7"	
	d. Open width (at Y portion)	mm/ft.in	520/1'8"		675/2'3"	
	e. Max. open width (at front-end cutter)	mm/ft.in	530/1'9"		670/2'2"	
	f. Arm tip width	mm/ft.in	120/5"		120/5"	
	h. Overall height	mm/ft.in	1300/4'3"		1680/5'6"	
	w. Overall width	mm/ft.in	780/2'7"		850/2'9"	
	l. Overall length	mm/ft.in	2315/7'7"	2495/8'2"	2710/8'11"	2875/9'5"
Weight	With short cutter(S.C.)	kg/lb	2300/5070	2350/5180	3610/7960	3760/8290
	With long cutter	kg/lb	2300/5070	2350/5180	3620/7980	3770/8310
	With S.C. and smashing point(S.P.)	kg/lb	2400/5290	2450/5400	3750/8270	3900/8600
	With pulverizer and S.P.	kg/lb			3720/8200	3870/8530
Required oil pressure		kgf/cm <sup>2</sup> (PSI/Mpa)	320 (4550/31.4)		320 (4550/31.4)	
Required oil flow rate		ltr/min(U.S.Gal)	380(100)		500(132)	
Arm speed	Opening	sec	3.2		3.0	
	Closing	sec	3.4		3.2	
Working range	A. Max. Crushing Height	mm/ft.in	10820/35'6"	11005/36'1"	11320/37'2"	11485/37'8"
	B. Max. Crushing Radius on Ground	mm/ft.in	10425/34'2"	10610/34'10"	11860/38'11"	12025/39'5"
	C. Max. Dumping Height	mm/ft.in	6358/20'10"	6205/20'4"	6100/20'	5935/19'6"
Applicable Base machine		Standard Boom and Arm	PC200/PC200LC,PC220/PC220LC,PC210/PC210LC&PC240LC		PC300/PC300LC,PC340LC&PC350/PC350LC	
		With demotion high reach	PC300LC & PC400LC			

Remarks  
 Onsite installation of the crusher and cutter requires a base machine to be modified. For more details, you are recommended to consult the Komatsu distributor.

## Three functions in one unit



- The machine in the photographs may partially differ from an actual machine on sale. Furthermore, the machine posture in the photographs only for sales brochures. For the sake of safety, do not leave a machine unattended in such a posture.
- For precautions when operating the machine, refer to the operation and maintenance manual.

©2006 Komatsu Printed in Japan 2006W1

**KOMATSU**<sup>®</sup>  
 Komatsu Ltd.

3-6 Akasaka 2-chome, Minato-ku  
 Tokyo 107-8414, Japan  
 Phone:(81)-3-5561-2787  
 Fax:(81)-3-3587-2928