

# Specifications

**JLG 1100SJ<sup>1</sup>**



## STANDARD FEATURES

- Platform Side Entry with Swing Gate Enclosure
- 180° Hydraulic Platform Rotator
- 5° Tilt Alarm/Indicator Light
- 12V-DC Auxiliary Power
- Proportional Controls
- Platform Console Machine Status Light Panel<sup>1</sup>
- Boom Envelope Control
- Steel Gull-Wing Hoods with Dust Seals
- Swing-Out Engine Tray
- Control ADE<sup>2</sup> System
- Engine Distress Warning/Shutdown – Selectable via JLG Analyzer
- 200 Liter (53 gal) Fuel Tank
- Drive-Out Extendable Axles
- All Motion Alarm
- 445/50D710 Foam-Filled Rim Protector Lug Tread Tires
- Glow Plugs
- Hour Meter
- Lifting/Tie-Down Lugs
- 2.44 m (8') JibPLUS boom
- Selectable Capacity Envelope
- AC Wiring to Platform
- 1/2" Airline to Platform
- Full-Time 4WD
- 3 Selectable Steering Modes
- Oscillating Axle
- Operator Tool Tray

## INDIVIDUAL OPTIONS

- SkyPower Package
  - 7500 Watt Generator
  - 240/120 V Single Phase
  - 240 V 3 Phase
- Hostile Environment Kit
  - Console Cover
  - Boom Wipers
  - Cylinder Bellows
  - Air Cleaner/Pre-Cleaner
- Diesel Fuel Conditioner
- Muffler Catalytic Converter
- Oil Cooler
- .91 x 1.83 m (3' x 6') Platform
- Head and Tail Lights
- Chassis Illumination Lights
- Strobe/Amber Beacon
- Steel Console Cover
- Oversize Footswitch Cover in Platform

## ACCESSORY PACKAGES

- SkyWelder Package<sup>3</sup>
- Nite Bright Package<sup>4</sup>

## REACH SPECIFICATIONS

**Platform Height** 33.53 m (110' 6")

**Horizontal Reach** 22.86 m (75')

**Swing** 360° Continuous

### Platform Capacity

Restricted 454 kg (1,000 lbs)

Unrestricted 227 kg (500 lbs)

**Platform Rotator** 180°

### JibPLUS

Length 2.44 m (8')

Vertical Range of Motion 130° (+75 / -55)

Horizontal Range of Motion 180°

**Platform Size** .91 x 2.44 m (3' x 8')

**Overall Width - Axles Retracted** 2.49 m (8' 2")

**Overall Width - Axles Extended** 3.81 m (12' 6")

**Tail Swing** 1.67 m (5' 6")

**Stowed Height** 3.05 m (10')

### Stowed Length

Jib Deployed 13.67 m (44' 10.2")

Trailer Transport Position 10.64 m (34' 10.9")

**Wheel Base** 3.8 m (12' 6")

### Ground Clearance

Axle 30 cm (12")

Chassis 65 cm (25.5")

**Weight<sup>2</sup>** 18,552 kg (40,900 lbs)

**Max Ground Bearing Pressure** 7.03 kg/cm<sup>2</sup> (100 PSI)

**Drive Speed** 5.2 kph (3.25 mph)

**Gradeability** 45%

### Turning Radius (Inside)

Axles Retracted 4.39 m (14' 5")

Axles Extended 2.44 m (8')

### Turning Radius (Outside)

Axles Retracted 6.86 m (22' 6")

Axles Extended 5.89 m (19' 4")

**Tires/Type** 445/50D710 Foam Filled

**Diesel Engine** TD2011L040 55.9 kW (74.9 hp)

**Fuel Tank Capacity** 200 liters (52 gal)

**Hydraulic Reservoir** 208.2 liters (55 gal)

**Auxiliary Power** 12V DC

<sup>1</sup> Provides indicator lights at platform control console for system distress, fuel level, low fuel, 5° tilt light, and foot switch status.

<sup>2</sup> Certain options or country standards may increase weight. Specifications may change to meet country standards or with addition of optional equipment.

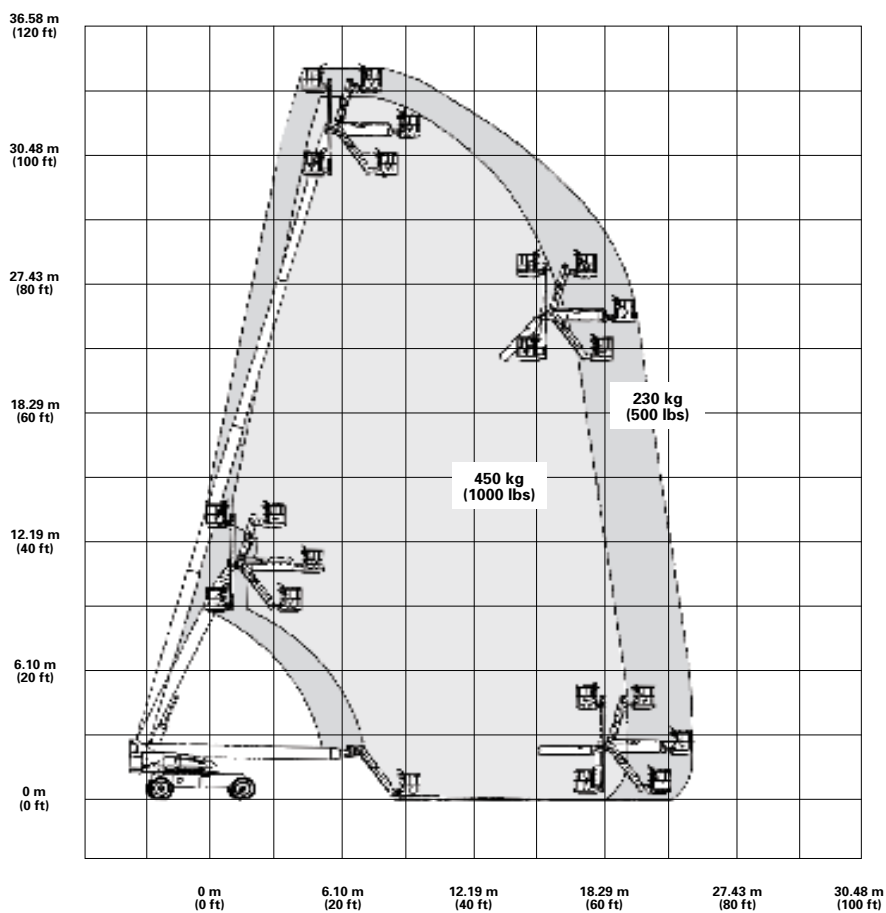
<sup>3</sup> SkyWelder Package includes 250 amp Miller<sup>®</sup> welder in the platform, leads, clamp, stinger and fire extinguisher.

<sup>4</sup> Night Bright Package includes six 40 watt lights – platform and chassis mounted.

## Specifications

**JLG 1100SJP**

### PLATFORM CAPACITY / REACH DIAGRAMS



#### THE JLG "1 AND 5" WARRANTY

JLG Industries, Inc. backs our products with our exclusive "1 and 5" Warranty. We provide coverage for one (1) full year, and cover all specified major structural components for five (5) years. These machines meet or exceed applicable OSHA Regulations in 29 CFR 1910.67, 29 CFR 1926.453, ANSI A92.5-2006 and CSA standard B354.4-02 as originally manufactured for intended applications. We reserve the right to make price, specification, and/or equipment changes without prior notification.

