

UR-W094C

UNIC MINI-CRAWLER CRANE

UR-W094C is the smallest mini-crawler crane in the range.

Measuring 595mm wide and weighing 1000kg, it is ideal for maneuvering into confined working area and capable to pass through standard size single doorway. Its outriggers allow for independent multi-angle configurations to sit at the best position in restricted or confined area.

Max
5.17m
Working radius

Max
5.6m
Hook height (Approx.)
(Above ground level)

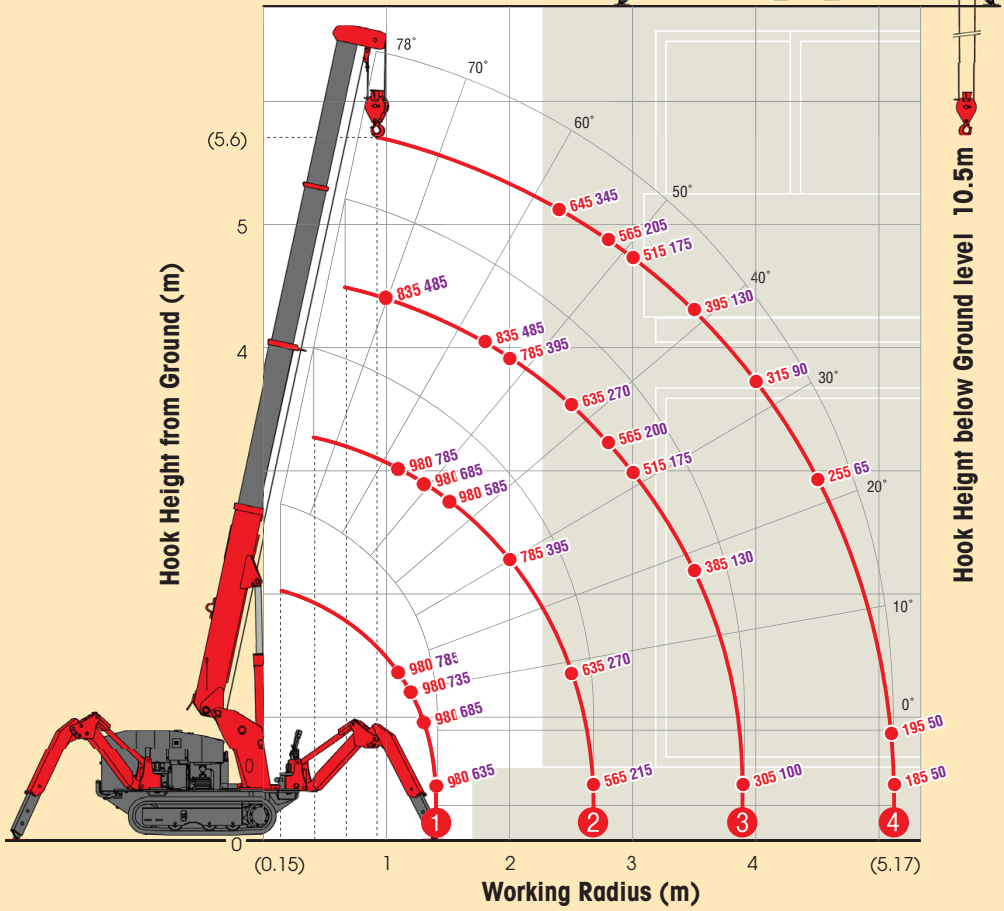
Max
0.995t
×1.5m
Lifting capacity

1000kg
Mass of crane

Radio
remote
control

WORKING RANGE & NET RATED LOADS (kg)

Outrigger ● Max-extended NOT max-extended



Automatic stop for overwinding

Weight for
Automatic stop for
overwinding

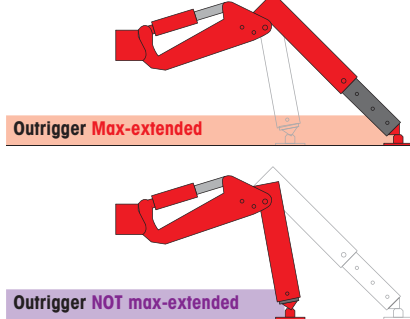
Emergency stop button

White crawler belt (Options)

SPECIFICATIONS

Crane model	UR-W094C
Lifting capacity	Max. 0.995t at 1.5m
Working radius	Min. 0.15m, Max. 5.17m
Hook height (Approx.)	Max. 5.6m
Length	Max. 10.5m with 2-part line
Extending speed	Min. 1.73m to Max. 5.49m
Raising angle / speed	3.76m / 17.0 sec.
Structure	0° to 78° / 6.5 sec.
Single line speed	4-section box beam type telescoping boom
Hook speed	17.0 m/min (at 3rd layer)
Winch	8.5 m/min (at 3rd layer with 2-part line)
Structure	Hydraulic motor driven, worm gear reduction, worm self-locking brake and wire rope retaining roller
Wire rope	Construction : 6 x Fi(29) GRADE B / Diameter x Length : 7mm x 27.0m / Breaking strength : 28.9kN [2950 kgf]
Hook block	0.98t capacity, single sheave with safety latch
Range	360° continuous rotation on a ball bearing race
Speed	1.5 rpm
Structure	Trochoid motor, worm gear reduction, spur gear reduction, and worm self-locking brake (supported by ball bearings)
Outriggers	3-steps (with damper) for bend and 4-steps extension. Double acting hydraulic cylinders with double pilot-operated check valves, direct pushing type (Directly connected with hydraulic automatic lock device)
Type	Variable delivery piston pump
Rated pressure	21.6 MPa [220 kgf/cm ²]
Rated delivery	20 liters/min
Rated revolution	1800 rpm
Hydraulic oil tank capacity	17 liters
Safety devices	Pressure relief valve for hydraulic circuit / Counterbalance valves for boom raising and boom telescoping cylinders / Double pilot-operated check valves for outrigger cylinders Boom angle indicator with load indicator / Hook safety latch / Automatic stop for overwinding / Overwinding alarm / Automatic stop for leaving minimum wire rope Emergency stop button (Ignition cut) / Inter-lock device of crane and crawling levers / Inter-lock device of crane and outriggers / Level / Load meter

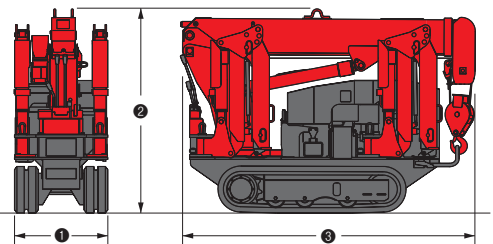
OUTRIGGER POSITIONS



CRAWLING GEAR

Crane model	UR-W094C
Crawling speed	0~2.2 km/h, forward / reverse
Hill climbing ability	20°
Tread length	900mm
Ground contact pressure	36.3 kPa (0.37 kgf/cm ²)
Engine manufacturer / model	Mitsubishi / GB300LE
Displacement	296cc
Maximum output	5.5kW(7.5PS) / 1800 rpm, Rated output
Fuel	Petrol
Fuel tank capacity	6 liters
Steering	Hydraulic drive independent of left / right
Starter	Starter motor (Recoil starter)

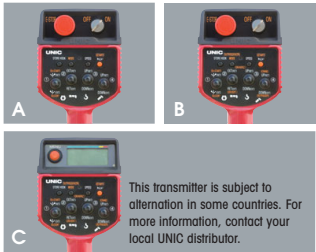
DIMENSIONS



Crane model	UR-W094C
1 Total width	595mm
2 Total height	1290mm
3 Total length	1870mm
Mass of crane	1000kg

Standard equipments and Options

UNIC MINI-CRAWLER CRANE



1 Radio remote control
A W094C, W295C
B W376C, W546C, W547C, W706C
C W1006C



2 Cable remote control



3 Load meter



4 Digital load meter
Load indication is each 20kg (0.02t).



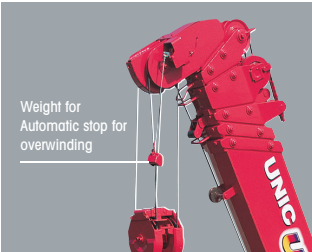
5 Automatic stop for overloading
KM-100 W376C, W546C, W547C



6 Automatic stop for overloading
ML-300 W706C



7 Safe load indicator



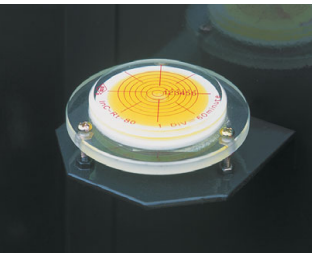
8 Automatic stop for overwinding



9 Automatic stop for leaving minimum wire rope



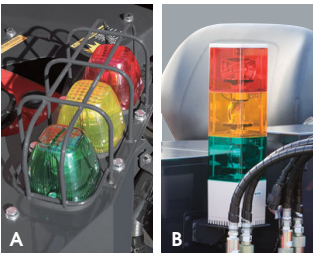
10 Emergency stop button
A W094C, W295C
B W376C, W546C, W547C, W706C, W1006C



11 Level



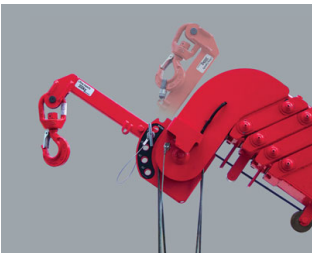
12 Turn over prevention device



13 Three colored lamp
A W295C
B W376C, W546C, W547C, W706C, W1006C



14 Boom outrigger monitor lamp



15 Searcher hook assembly



16 Fly jib assembly



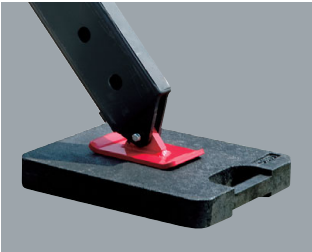
17 Single line hook



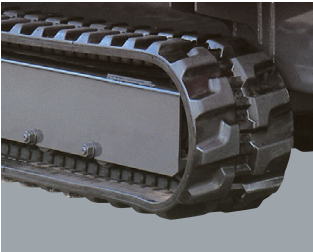
18 Working light



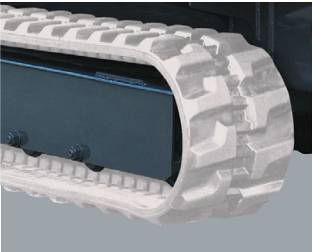
19 Headlight



20 Outrigger mats



21 Black crawler belt



22 White crawler belt



24 Rubber Pad



25 20M cable for motor (200V)

26 20M cable for motor (400V)

STANDARD EQUIPMENTS / OPTION [★ Standard ● Option — Not available]

Crane model	UR-W094C		UR-W295C		UR-W295C1		UR-W376C2		UR-W546C2		UR-W547C2		UR-W706C2		UR-W1006C2		Crane model
	UR-W094CP2E		UR-W295CP2A	UR-W295CP2AM	UR-W295C1A	UR-W295C1AM	UR-W376C2A	UR-W376C2AM	UR-W546C2A	UR-W546C2AM	UR-W547C2A	UR-W547C2AM	UR-W706C2A	UR-W706C2AM	UR-W1006C2A	UR-W1006C2AM	
Engine manufacturer / model	Mitsubishi / GB300LE		Mitsubishi / GB400LE	Mitsubishi / GB400LE	Kubota / Z482-E3B	Kubota / Z482-E3B	Yanmar / 3TNV76	Yanmar / 3TNV76	Yanmar / 3TNV76	Yanmar / 3TNV76	Yanmar / 3TNV76	Yanmar / 3TNV76	Mitsubishi / S4L2	Mitsubishi / S4L2	Yanmar / 4TNV88	Yanmar / 4TNV88	Engine manufacturer / model
Fuel	Petrol		Petrol	Petrol	Diesel	Diesel	Diesel	Diesel	Diesel	Diesel	Diesel	Diesel	Diesel	Diesel	Diesel	Diesel	Fuel
Electric motor	—		—	AC 200V or 400V	—	AC 200V or 400V	—	AC 200V or 400V	—	AC 200V or 400V	—	AC 200V or 400V	—	AC 200V or 400V	—	AC 400/400-440V	Electric motor
1 Radio remote control	★		★	★	★	★	★	★	★	★	★	★	★	★	★	★	Radio remote control
2 Cable remote control	●		●	●	●	●	●	●	●	●	●	●	●	●	—	—	Cable remote control
3 Load meter	★		★	★	★	★	—	—	—	—	—	—	—	—	—	—	Load meter
4 Digital load meter	—		●	●	●	●	★	★	★	★	★	★	★	★	★	★	Digital load meter
5 Automatic stop for overloading (KM-100)	—		●	●	●	●	★	★	★	★	★	★	—	—	—	—	Automatic stop for overloading (KM-100)
6 Automatic stop for overloading (ML-300)	—		—	—	—	—	—	—	—	—	—	—	★	★	—	—	Automatic stop for overloading (ML-300)
7 Safe load indicator	—		—	—	—	—	—	—	—	—	—	—	—	—	★	★	Safe load indicator
8 Automatic stop for overwinding	★		★	★	★	★	★	★	★	★	★	★	★	★	★	★	Automatic stop for overwinding
9 Automatic stop for leaving minimum wire rope	★		★	★	★	★	★	★	★	★	★	★	★	★	★	★	Automatic stop for leaving minimum wire rope
10 Emergency stop button	★		★	★	★	★	★	★	★	★	★	★	★	★	★	★	Emergency stop button
11 Level	★		★	★	★	★	★	★	★	★	★	★	★	★	★	★	Level
12 Turn over prevention device	—		★	★	★	★	●	●	—	—	—	—	—	—	—	—	Turn over prevention device
13 Three colored lamp	—		●	●	●	●	★	★	★	★	★	★	★	★	★	★	Three colored lamp
14 Boom outrigger monitor lamp	—		—	—	—	—	★	★	★	★	★	★	★	★	★	★	Boom outrigger monitor lamp
15 Searcher hook assembly	—		●	●	●	●	●	●	●	●	●	●	—	—	—	—	Searcher hook assembly
16 Fly jib assembly	—		—	—	—	—	●	●	●	●	—	—	●	●	★	★	Fly jib assembly
17 Single line hook	—		●	●	●	●	—	—	—	—	—	—	—	—	—	—	Single line hook
18 Working light	●		●	●	●	●	●	●	●	●	●	●	●	●	—	—	Working light
19 Headlight	—		—	—	—	—	★	★	★	★	★	★	★	★	★	★	Headlight
20 Outrigger mats	●		●	●	●	●	●	●	●	●	●	●	●	●	—	—	Outrigger mats
21 Black crawler belt	★		★	★	★	★	★	★	★	★	★	★	★	★	—	—	Black crawler belt
22 White crawler belt	●		●	●	●	●	●	●	—	—	—	—	—	—	—	—	White crawler belt
23 White crawler belt (as spare)	●		●	●	●	●	●	●	—	—	—	—	—	—	—	—	White crawler belt (as spare)
24 Rubber Pad	—		—	—	—	—	—	—	—	—	—	—	—	—	★	★	Rubber Pad
25 20M cable for motor (200V)	—		—	●	—	●	—	●	—	●	—	●	—	●	—	—	20M cable for motor (200V)
26 20M cable for motor (400V)	—		—	●	—	●	—	●	—	●	—	●	—	●	—	—	20M cable for motor (400V)