

UR-W1006C

UNIC MINI-CRAWLER CRANE

The mightiest Mini Crawler Cranes in the world, UR-W1006C boasts an unrivalled 10.14t lifting capacity.

UR-W1006C offers a generous 30.7m lifting height and 24.3m working radius, yet at only 2000mm wide still retains class-beating minimal dimensions for working in restricted areas. UR-W1006C also has a Pick & Carry function which enables it to travel with loads up to 1500kg. The full interlocking system and configurable outriggers ensures maximum stability on uneven ground surfaces.

Max 22.8m
30.7m (with Fly jib assembly)
Hook height (Approx.)
(Above ground level)



Max 10.14t
×3.0m
Lifting capacity

Max 21.93m
24.3m (with Fly jib assembly)
Working radius

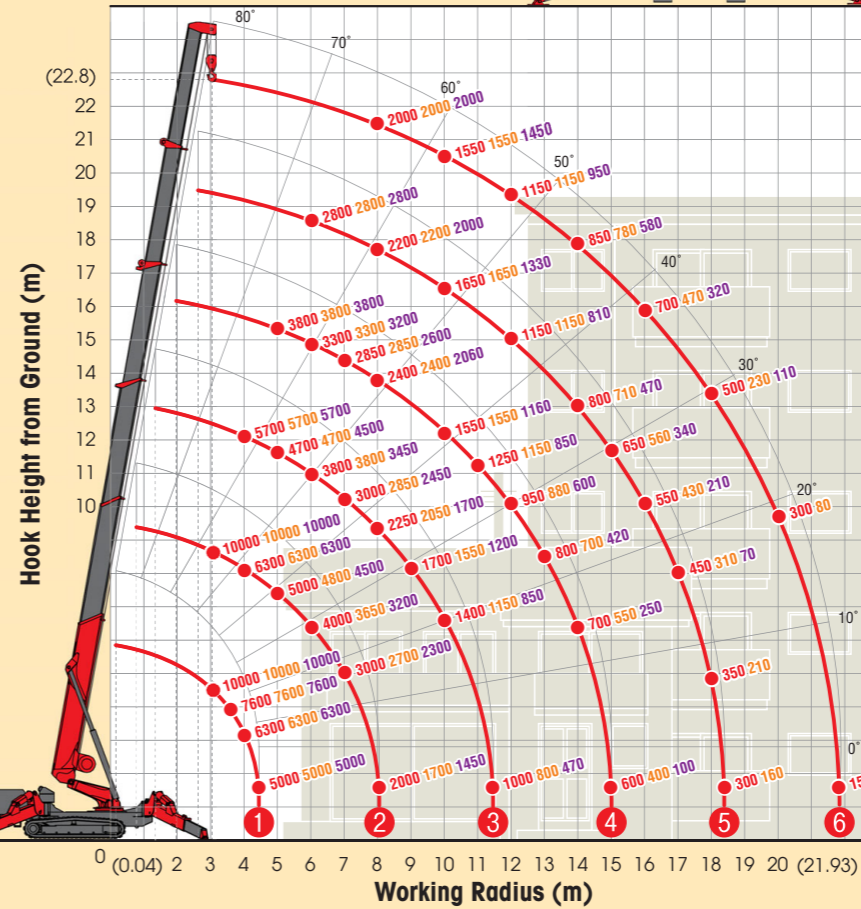
13800kg
Mass of crane

Radio remote control

NOTE: This transmitter is subject to alternation in some countries. For more information, contact your local UNIC distributor.

WORKING RANGE & NET RATED LOADS (kg)

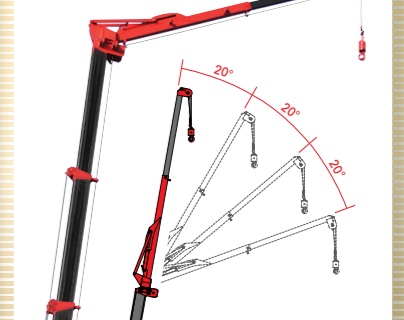
Outrigger ● Max-extended Mid-extended Min-extended



Safe load indicator



Fly jib assembly



Length	4.73m ~ 7.87m
Lifting capacity	Max. 1050kg
Tilt angles	0°, 20°, 40°, 60°

Pick & Carry

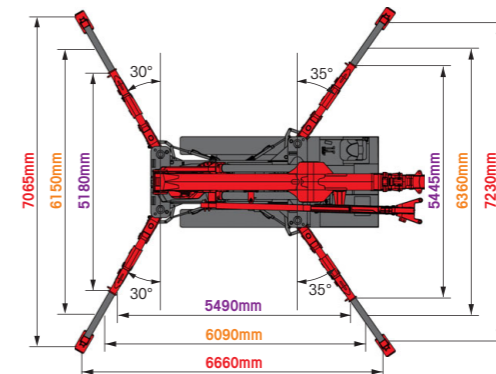
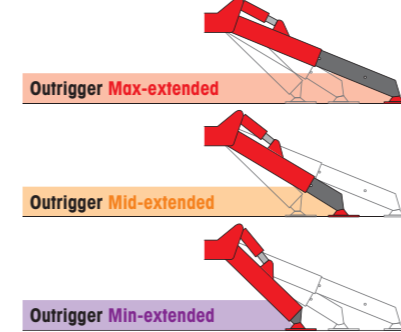


Lifting capacity	1500kg
Working radius	2.5m
Boom length	Boom 1 and 1+2 only

SPECIFICATIONS

Crane model	UR-W1006C2	
Lifting capacity	Max. 10.14t at 3.0m; with Fly jib assembly Max. 1.05t at 9.7m (boom angle 70° and jib tilt angle 0°)	
Working radius	Min. 0.04m, Max. 21.93m; with Fly jib assembly Max. 24.30m	
Hook height (Approx.)	Above ground level: Max. 22.8m; with Fly jib assembly Max. 30.7m Below ground level: Max. 30.0m with 4-part line; with Fly jib assembly Max. 123.0m with 1-part line	
Length	Min. 5.75m to Max. 23.10m	
Boom	Extending speed [with electric power unit]	17.35m / 88.0 sec. [50Hz] 17.35m / 123.0 sec. [60Hz] 17.35m / 103.0 sec.
	Raising angle / speed [with electric power unit]	0° to 80° / 44.0 sec. [50Hz] 0° to 80° / 80.0 sec. [60Hz] 0° to 80° / 67.0 sec.
	Structure	6-section box beam type telescoping boom
Winch	Single line speed [with electric power unit]	40.0 m/min (at 4th layer) [50Hz] 20.8 m/min (at 4th layer) [60Hz] 24.8 m/min (at 4th layer)
	Hook speed [with electric power unit]	10.0 m/min (at 4th layer with 4-part line) [50Hz] 5.2 m/min (at 4th layer with 4-part line) [60Hz] 6.2 m/min (at 4th layer with 4-part line)
	Structure	Hydraulic motor driven, planetary gear reduction, with automatic mechanical brake and counterbalance valve and wire rope retaining roller
Slewing	Range	360° continuous rotation on a ball bearing race
	Speed [with electric power unit]	1.3 rpm [50Hz] 1.2 rpm [60Hz] 1.2 rpm
	Structure	Hydraulic motor driven, worm gear reduction, spur gear reduction, and worm self-locking brake (supported by ball bearings)
Outriggers	Horizontal, Vertical / Position	A double acting hydraulic cylinder, direct pushing type (Directly connected with hydraulic automatic lock device) / A double acting hydraulic cylinder with link system
	Type	Variable delivery piston pump
	Rated pressure	27.5 MPa [280 kgf/cm ²]
	Rated delivery	105 liters/min
Hydraulic pump	Rated revolution	2500 rpm
	Rated delivery	215 liters
	Hydraulic oil tank capacity	215 liters
Safety devices	Pressure relief valve for hydraulic circuit / Counterbalance valves for boom raising and boom telescoping cylinders / Pilot-operated check valves for outrigger cylinders (Horizontal) / Double pilot-operated check valves for outrigger cylinders (Vertical) / Boom angle indicator with load indicator / Hook safety latch / Automatic mechanical brake for winch / Automatic stop for overwinding / Overwinding alarm / Automatic stop for leaving minimum wire rope / Emergency stop button / Inter-lock device of crane and crawling levers / Inter-lock device of crane and outriggers / Level / Safe load indicator / Three colored lamp / Headlight / Boom outrigger monitor lamp	

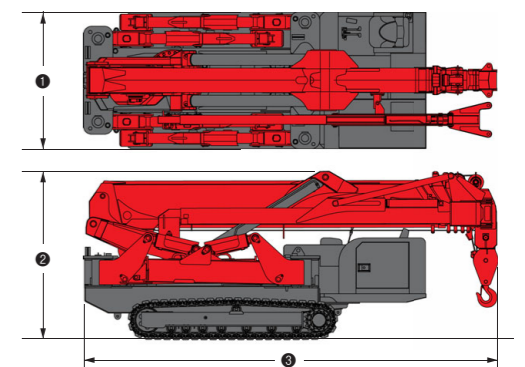
OUTRIGGER POSITIONS



CRAWLING GEAR

Crane model	UR-W1006C2
Crawling speed [with electric power unit]	0-2.6 km/h, forward / backward [50Hz] 0-1.3 km/h [60Hz] 0-1.5 km/h
Hill climbing ability	23°
Tread length	2515mm
Ground contact pressure [with electric power unit]	67.3 kPa (0.69 kgf/cm ²) [60Hz] 68.2 kPa (0.70 kgf/cm ²)
Engine manufacturer / model	Yanmar / 4TNV88
Displacement	2189cc
Maximum output	29.80kW(40.5PS) / 2500 rpm, Continuous rated output
Fuel	Diesel
Fuel tank capacity	75 liters
Steering	Hydraulic drive independent of left / right
Starter	Starter motor

DIMENSIONS



Crane model	UR-W1006C2
① Total width	2000mm
② Total height	2460mm
③ Total length	6060mm
Mass of crane	13800kg [14000kg] [with electric power unit]

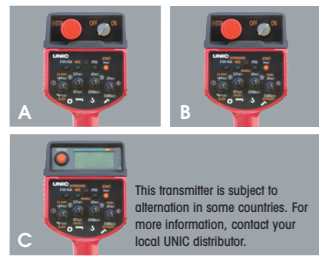
Electric power unit specifications

Rated power	11.0kW (3-phase 4 poles)
Voltage	AC 400/400-440V (50Hz / 60Hz) 3 phase 4P

*Not included any cables.

Standard equipments and Options

UNIC MINI-CRAWLER CRANE



1 Radio remote control
 A W094C, W295C
 B W376C, W546C, W547C, W706C
 C W1006C



2 Cable remote control



3 Load meter



4 Digital load meter
 Load indication is each 20kg (0.02t).



5 Automatic stop for overloading
 KM-100 W376C, W546C, W547C



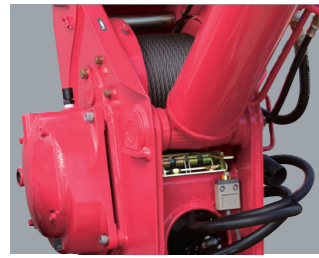
6 Automatic stop for overloading
 ML-300 W706C



7 Safe load indicator



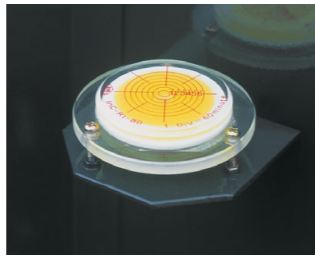
8 Automatic stop for overwinding



9 Automatic stop for leaving minimum wire rope



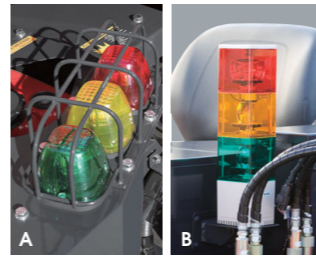
10 Emergency stop button
 A W094C, W295C
 B W376C, W546C, W547C, W706C, W1006C



11 Level



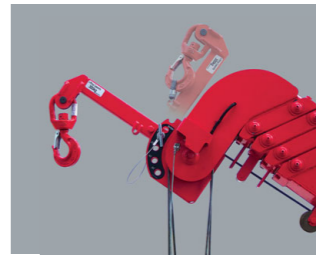
12 Turn over prevention device



13 Three colored lamp
 A W295C
 B W376C, W546C, W547C, W706C, W1006C



14 Boom outrigger monitor lamp



15 Searcher hook assembly



16 Fly jib assembly



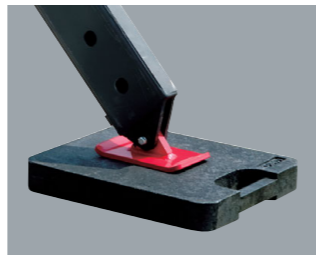
17 Single line hook



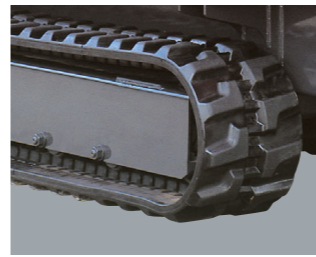
18 Working light



19 Headlight



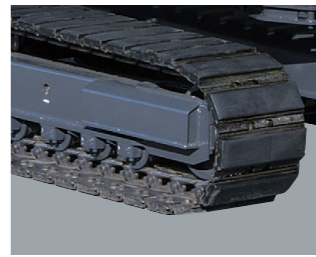
20 Outrigger mats



21 Black crawler belt



22 White crawler belt
23 White crawler belt (as spare)



24 Rubber Pad



25 20M cable for motor (200V)
26 20M cable for motor (400V)

STANDARD EQUIPMENTS / OPTION [★ Standard ● Option — Not available]

Crane model	UR-W094C		UR-W295C		UR-W295C1		UR-W376C2		UR-W546C2		UR-W547C2		UR-W706C2		UR-W1006C2		Crane model
	UR-W094CP2E	UR-W295CP2A	UR-W295CP2AM	UR-W295C1A	UR-W295C1AM	UR-W376C2A	UR-W376C2AM	UR-W546C2A	UR-W546C2AM	UR-W547C2A	UR-W547C2AM	UR-W706C2A	UR-W706C2AM	UR-W1006C2A	UR-W1006C2AM		
Engine manufacturer / model	Mitsubishi / GB300LE	Mitsubishi / GB400LE	Mitsubishi / GB400LE	Kubota / Z482-E3B	Kubota / Z482-E3B	Yanmar / 3TNV76	Yanmar / 3TNV76	Yanmar / 3TNV76	Yanmar / 3TNV76	Yanmar / 3TNV76	Yanmar / 3TNV76	Mitsubishi / S4L2	Mitsubishi / S4L2	Yanmar / 4TNV88	Yanmar / 4TNV88	Engine manufacturer / model	
Fuel	Petrol	Petrol	Petrol	Diesel	Diesel	Diesel	Diesel	Diesel	Diesel	Diesel	Diesel	Diesel	Diesel	Diesel	Diesel	Fuel	
Electric motor	—	—	AC 200V or 400V	—	AC 200V or 400V	—	AC 200V or 400V	—	AC 200V or 400V	—	AC 200V or 400V	—	AC 200V or 400V	—	AC 400/400-440V	Electric motor	
1 Radio remote control	★	★	★	★	★	★	★	★	★	★	★	★	★	★	★	1 Radio remote control	
2 Cable remote control	●	●	●	●	●	●	●	●	●	●	●	●	●	●	●	2 Cable remote control	
3 Load meter	★	★	★	★	★	—	—	—	—	—	—	—	—	—	—	3 Load meter	
4 Digital load meter	—	●	●	●	●	★	★	★	★	★	★	★	★	★	★	4 Digital load meter	
5 Automatic stop for overloading (KM-100)	—	●	●	●	●	★	★	★	★	★	★	—	—	—	—	5 Automatic stop for overloading (KM-100)	
6 Automatic stop for overloading (ML-300)	—	—	—	—	—	—	—	—	—	—	—	★	★	—	—	6 Automatic stop for overloading (ML-300)	
7 Safe load indicator	—	—	—	—	—	—	—	—	—	—	—	—	—	—	—	7 Safe load indicator	
8 Automatic stop for overwinding	★	★	★	★	★	★	★	★	★	★	★	★	★	★	★	8 Automatic stop for overwinding	
9 Automatic stop for leaving minimum wire rope	★	★	★	★	★	★	★	★	★	★	★	★	★	★	★	9 Automatic stop for leaving minimum wire rope	
10 Emergency stop button	★	★	★	★	★	★	★	★	★	★	★	★	★	★	★	10 Emergency stop button	
11 Level	★	★	★	★	★	★	★	★	★	★	★	★	★	★	★	11 Level	
12 Turn over prevention device	—	★	★	★	★	●	●	—	—	—	—	—	—	—	—	12 Turn over prevention device	
13 Three colored lamp	—	●	●	●	●	★	★	★	★	★	★	★	★	★	★	13 Three colored lamp	
14 Boom outrigger monitor lamp	—	—	—	—	—	★	★	★	★	★	★	★	★	★	★	14 Boom outrigger monitor lamp	
15 Searcher hook assembly	—	●	●	●	●	●	●	●	●	●	●	●	●	●	●	15 Searcher hook assembly	
16 Fly jib assembly	—	●	●	●	●	●	●	●	●	●	●	●	●	●	●	16 Fly jib assembly	
17 Single line hook	—	●	●	●	●	—	—	—	—	—	—	—	—	—	—	17 Single line hook	
18 Working light	●	●	●	●	●	●	●	●	●	●	●	●	●	●	●	18 Working light	
19 Headlight	—	—	—	—	—	★	★	★	★	★	★	★	★	★	★	19 Headlight	
20 Outrigger mats	●	●	●	●	●	●	●	●	●	●	●	●	●	●	●	20 Outrigger mats	
21 Black crawler belt	★	★	★	★	★	★	★	★	★	★	★	★	★	★	★	21 Black crawler belt	
22 White crawler belt	●	●	●	●	●	●	●	—	—	—	—	—	—	—	—	22 White crawler belt	
23 White crawler belt (as spare)	●	●	●	●	●	●	●	—	—	—	—	—	—	—	—	23 White crawler belt (as spare)	
24 Rubber Pad	—	—	—	—	—	—	—	—	—	—	—	—	—	—	—	24 Rubber Pad	
25 20M cable for motor (200V)	—	—	●	—	●	—	—	—	—	—	—	—	—	—	—	25 20M cable for motor (200V)	
26 20M cable for motor (400V)	—	—	●	—	●	—	—	—	—	—	—	—	—	—	—	26 20M cable for motor (400V)	