

UR-W295C

UNIC MINI-CRAWLER CRANE

UR-W295C is narrow enough to allow access through standard size doorway, but with 2.93t of lifting power.

UNIC original stability sensor system provides the benefit of turnover protection for safety. Its outriggers allow for independent multi-angle configurations to place at the best position in restricted or confined area. Easy and quickly installed searcher hook and fly jib options will increase working radius and lifting height further more.

Max 8.41m Working radius

Max 2.93t × 1.4m Lifting capacity

1850kg Mass of crane

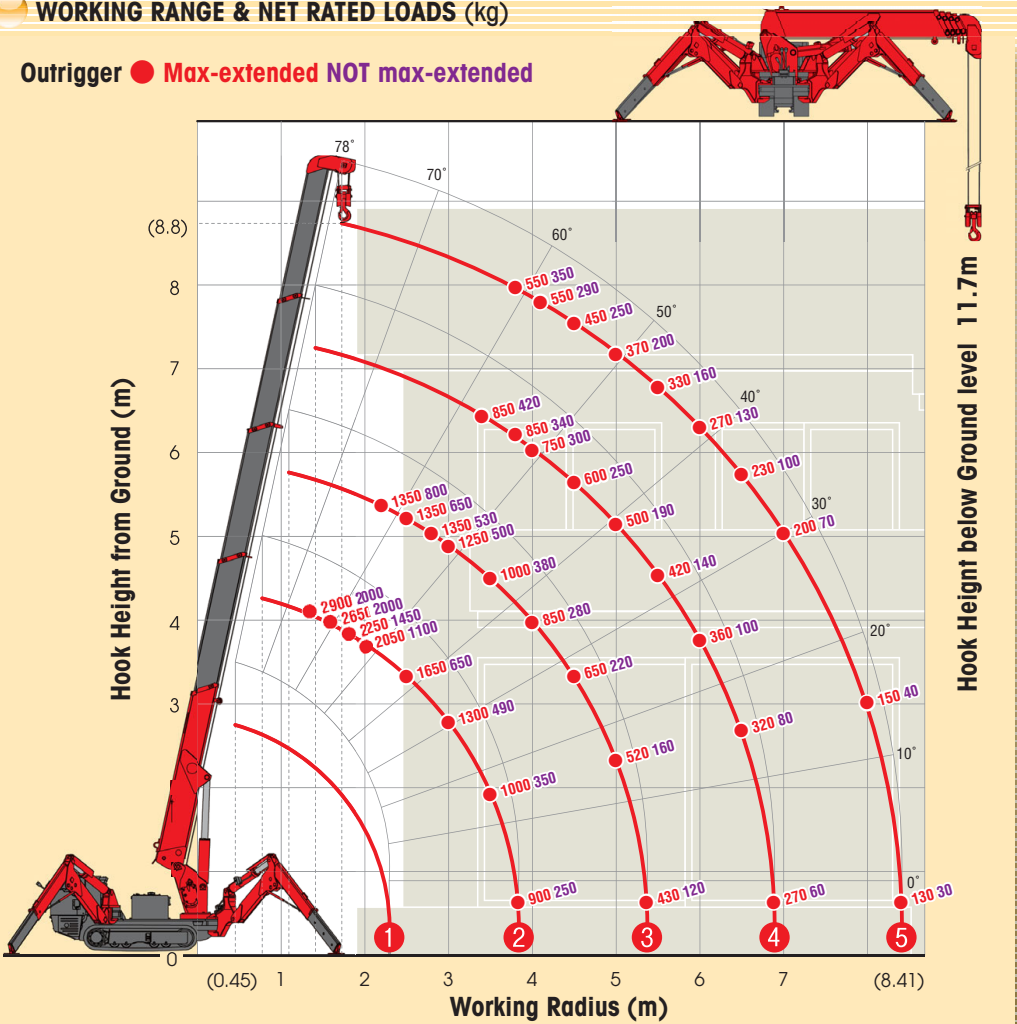
Radio remote control

Max 8.8m Hook height (Approx.) (Above ground level)

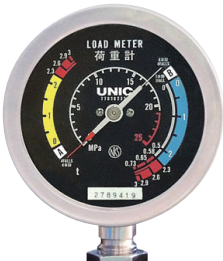
with electric power unit

WORKING RANGE & NET RATED LOADS (kg)

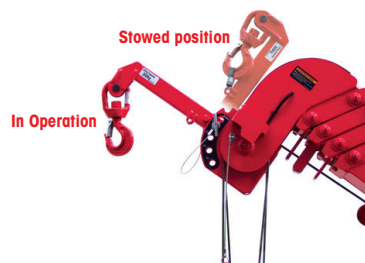
Outrigger ● Max-extended NOT max-extended



Load meter

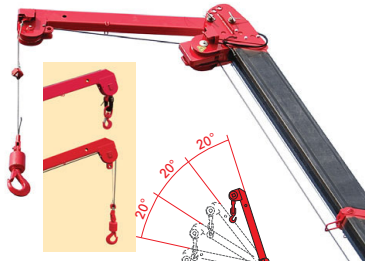


Searcher hook assembly (Options)



Length	500mm
Lifting capacity	Max. 300kg
Tilt angles	0°, 20°, 40°, 60°

Fly jib assembly (Options)

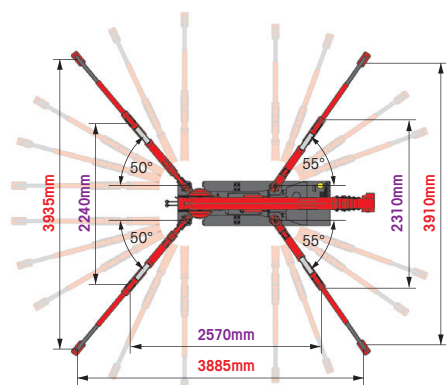
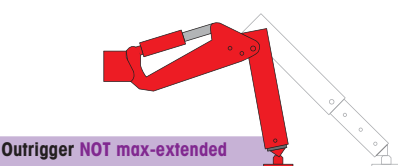
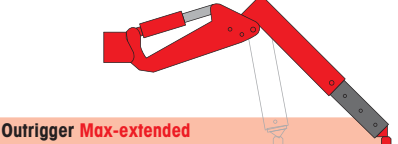


Length	1.5m
Lifting capacity	Max. 700kg
Tilt angles	0°, 20°, 40°, 60°

SPECIFICATIONS

Crane model	UR-W295C	UR-W295C1
Lifting capacity	Max. 2.93t at 1.4m	
Working radius	Min. 0.45m, Max. 8.41m	
Hook height (Approx.)	Max. 8.8m	
Length	Min. 11.7m with 4-part line	
Boom	Min. 2.53m to Max. 8.65m	
Extending speed [with electric power unit]	6.12m / 20.0 sec. [50Hz] 6.12m / 34.0 sec. [60Hz] 6.12m / 28.0 sec.	
Raising angle / speed [with electric power unit]	0° to 78° / 11.0 sec. [50Hz] 0° to 78° / 18.0 sec. [60Hz] 0° to 78° / 15.0 sec.	
Structure	5-section box beam type telescoping boom	
Single line speed [with electric power unit]	40.0 m/min (at 4th layer) [50Hz] 22.0 m/min (at 4th layer) [60Hz] 27.0 m/min (at 4th layer)	
Winch	10.0 m/min (at 4th layer with 4-part line) [50Hz] 5.5 m/min (at 4th layer with 4-part line) [60Hz] 6.7 m/min (at 4th layer with 4-part line)	
Structure	Hydraulic motor driven, spur gear reduction, with automatic mechanical brake	
Wire rope	Construction : IWRC 6 x WS(26) GRADE B / Diameter x Length : 8mm x 54.0m / Breaking strength : 42.4kN (4320 kgf)	
Hook block	2.90t capacity, 2 sheaves with safety latch	
Range	360° continuous rotation on a ball bearing race	
Speed [with electric power unit]	1.5 rpm [50Hz] 1.5 rpm [60Hz] 1.5 rpm	
Structure	Trochoid motor, worm gear reduction, and worm self-locking brake (supported by ball bearings)	
Outriggers	2-section (with damper) for bend and 3-section extension. Double acting hydraulic cylinders with pilot-operated check valves, direct pushing type (Directly connected with hydraulic automatic lock device)	
Type	Variable delivery piston pump	
Rated pressure	21.6 MPa [220 kgf/cm ²]	
Rated delivery	38 liters/min	30 liters/min
Rated revolution	2000 rpm	2600 rpm
Hydraulic oil tank capacity	27 liters	
Safety devices	Pressure relief valve for hydraulic circuit / Counterbalance valves for boom raising and boom telescoping cylinders / Pilot-operated check valves for outrigger cylinders / Boom angle indicator with load indicator / Hook safety latch / Automatic mechanical brake for winch / Overwinding alarm / Automatic stop for leaving minimum wire rope / Emergency stop button (Ignition cut) / Inter-lock device of crane and crawling levers / Inter-lock device of crane and outriggers / Level / Turn over prevention device / Load meter	

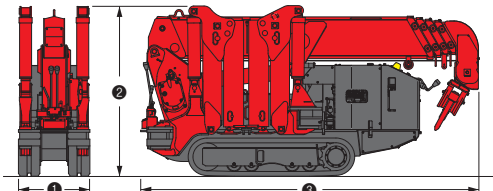
OUTRIGGER POSITIONS



CRAWLING GEAR

Crane model	UR-W295C	UR-W295C1
Crawling speed [with electric power unit]	0~2.3 km/h, forward / reverse [50Hz] 0~1.2 km/h [60Hz] 0~1.4 km/h	0~2.0 km/h, forward / reverse [50Hz] 0~1.2 km/h [60Hz] 0~1.4 km/h
Hill climbing ability	20°	20°
Tread length	1050mm	1050mm
Ground contact pressure [with electric power unit]	48.0 kPa [0.49 kgf/cm ²] 51.4 kPa [0.52 kgf/cm ²]	49.8 kPa [0.51 kgf/cm ²] 52.9 kPa [0.54 kgf/cm ²]
Engine manufacturer / model	Mitsubishi / GB400LE	Kubota / Z482-E3B
Displacement	391cc	479cc
Maximum output	6.6kW(9.0PS) / 1800 rpm, Rated output	7.4kW(10.0PS) / 2600 rpm, Rated output
Fuel	Petrol	Diesel
Fuel tank capacity	6 liters	10 liters
Steering	Hydraulic drive independent of left / right	Hydraulic drive independent of left / right
Starter	Starter motor (Recoil starter)	Starter motor

DIMENSIONS



Crane model	UR-W295C	UR-W295C1
① Total width	600mm	
② Total height	1375mm [1430mm]	
③ Total length	2690mm	2730mm
Mass of crane	1850kg [1980kg]	1920kg [2040kg]

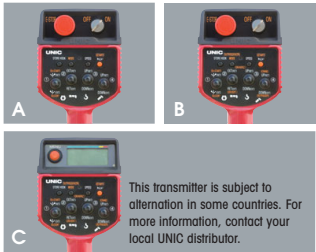
Electric power unit specifications

Rated power	3.7kW (3-phase 4 poles)
Voltage	AC 200V or 400V (50Hz / 60Hz) 3 phase 4P

*Not included any cables.

Standard equipments and Options

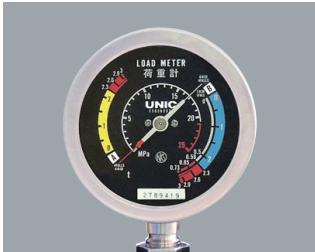
UNIC MINI-CRAWLER CRANE



1 Radio remote control
A W094C, W295C
B W376C, W546C, W547C, W706C
C W1006C



2 Cable remote control



3 Load meter



4 Digital load meter
Load indication is each 20kg (0.02t).



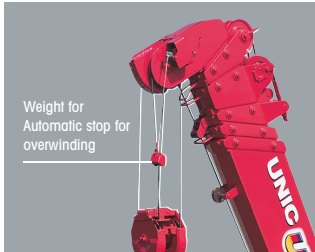
5 Automatic stop for overloading
KM-100 W376C, W546C, W547C



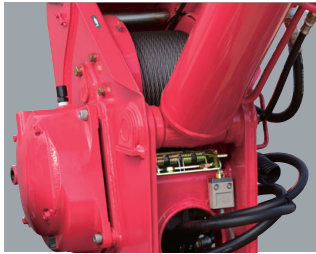
6 Automatic stop for overloading
ML-300 W706C



7 Safe load indicator



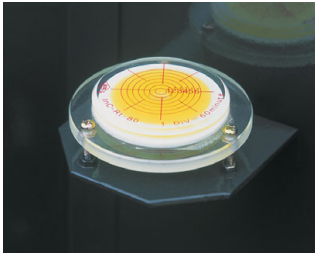
8 Automatic stop for overwinding



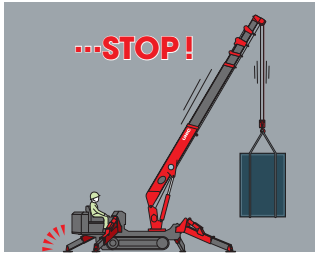
9 Automatic stop for leaving minimum wire rope



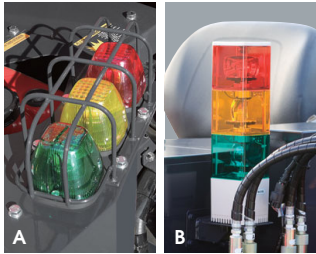
10 Emergency stop button
A W094C, W295C
B W376C, W546C, W547C, W706C, W1006C



11 Level



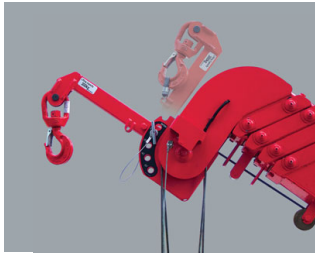
12 Turn over prevention device



13 Three colored lamp
A W295C
B W376C, W546C, W547C, W706C, W1006C



14 Boom outrigger monitor lamp



15 Searcher hook assembly



16 Fly jib assembly



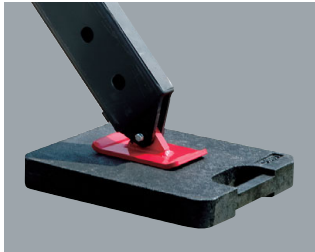
17 Single line hook



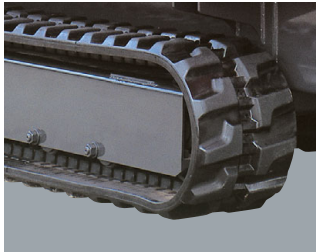
18 Working light



19 Headlight



20 Outrigger mats



21 Black crawler belt



22 White crawler belt
23 White crawler belt (as spare)



24 Rubber Pad



25 20M cable for motor (200V)
26 20M cable for motor (400V)

STANDARD EQUIPMENTS / OPTION [★ Standard ● Option — Not available]

Crane model	UR-W094C		UR-W295C		UR-W295C1		UR-W376C2		UR-W546C2		UR-W547C2		UR-W706C2		UR-W1006C2		Crane model
	UR-W094CP2E		UR-W295CP2A	UR-W295CP2AM	UR-W295C1A	UR-W295C1AM	UR-W376C2A	UR-W376C2AM	UR-W546C2A	UR-W546C2AM	UR-W547C2A	UR-W547C2AM	UR-W706C2A	UR-W706C2AM	UR-W1006C2A	UR-W1006C2AM	
Engine manufacturer / model	Mitsubishi / GB300LE		Mitsubishi / GB400LE	Mitsubishi / GB400LE	Kubota / Z482-E3B	Kubota / Z482-E3B	Yanmar / 3TNV76	Yanmar / 3TNV76	Yanmar / 3TNV76	Yanmar / 3TNV76	Yanmar / 3TNV76	Yanmar / 3TNV76	Mitsubishi / S4L2	Mitsubishi / S4L2	Yanmar / 4TNV88	Yanmar / 4TNV88	Engine manufacturer / model
Fuel	Petrol		Petrol	Petrol	Diesel	Diesel	Diesel	Diesel	Diesel	Diesel	Diesel	Diesel	Diesel	Diesel	Diesel	Diesel	Fuel
Electric motor	—		—	AC 200V or 400V	—	AC 200V or 400V	—	AC 200V or 400V	—	AC 200V or 400V	—	AC 200V or 400V	—	AC 200V or 400V	—	AC 400/400-440V	Electric motor
1 Radio remote control	★		★	★	★	★	★	★	★	★	★	★	★	★	★	★	Radio remote control
2 Cable remote control	●		●	●	●	●	●	●	●	●	●	●	●	●	—	—	Cable remote control
3 Load meter	★		★	★	★	★	—	—	—	—	—	—	—	—	—	—	Load meter
4 Digital load meter	—		●	●	●	●	★	★	★	★	★	★	★	★	★	★	Digital load meter
5 Automatic stop for overloading (KM-100)	—		●	●	●	●	★	★	★	★	★	★	—	—	—	—	Automatic stop for overloading (KM-100)
6 Automatic stop for overloading (ML-300)	—		—	—	—	—	—	—	—	—	—	—	★	★	—	—	Automatic stop for overloading (ML-300)
7 Safe load indicator	—		—	—	—	—	—	—	—	—	—	—	—	—	★	★	Safe load indicator
8 Automatic stop for overwinding	★		★	★	★	★	★	★	★	★	★	★	★	★	★	★	Automatic stop for overwinding
9 Automatic stop for leaving minimum wire rope	★		★	★	★	★	★	★	★	★	★	★	★	★	★	★	Automatic stop for leaving minimum wire rope
10 Emergency stop button	★		★	★	★	★	★	★	★	★	★	★	★	★	★	★	Emergency stop button
11 Level	★		★	★	★	★	★	★	★	★	★	★	★	★	★	★	Level
12 Turn over prevention device	—		★	★	★	★	●	●	—	—	—	—	—	—	—	—	Turn over prevention device
13 Three colored lamp	—		●	●	●	●	★	★	★	★	★	★	★	★	★	★	Three colored lamp
14 Boom outrigger monitor lamp	—		—	—	—	—	★	★	★	★	★	★	★	★	★	★	Boom outrigger monitor lamp
15 Searcher hook assembly	—		●	●	●	●	●	●	●	●	●	●	—	—	—	—	Searcher hook assembly
16 Fly jib assembly	—		—	—	—	—	●	●	●	●	—	—	●	●	★	★	Fly jib assembly
17 Single line hook	—		●	●	●	●	—	—	—	—	—	—	—	—	—	—	Single line hook
18 Working light	●		●	●	●	●	●	●	●	●	●	●	●	●	—	—	Working light
19 Headlight	—		—	—	—	—	★	★	★	★	★	★	★	★	★	★	Headlight
20 Outrigger mats	●		●	●	●	●	●	●	●	●	●	●	●	●	—	—	Outrigger mats
21 Black crawler belt	★		★	★	★	★	★	★	★	★	★	★	★	★	—	—	Black crawler belt
22 White crawler belt	●		●	●	●	●	●	●	—	—	—	—	—	—	—	—	White crawler belt
23 White crawler belt (as spare)	●		●	●	●	●	●	●	—	—	—	—	—	—	—	—	White crawler belt (as spare)
24 Rubber Pad	—		—	—	—	—	—	—	—	—	—	—	—	—	★	★	Rubber Pad
25 20M cable for motor (200V)	—		—	●	—	●	—	●	—	●	—	●	—	●	—	—	20M cable for motor (200V)
26 20M cable for motor (400V)	—		—	●	—	●	—	●	—	●	—	●	—	●	—	—	20M cable for motor (400V)