

# UR-W706C

# UNIC MINI-CRAWLER CRANE

**UR-W706C features maximum hook height of 19.5m with its six section hydraulic boom.**

With a 6.05t lifting capacity at 3.0m and maximum hook height of 19.5m, it is compact enough to travel through a standard size double doorway. Its compactness and flexibility allow it to travel where no other cranes could have gone before.

**Max 19.5m**

Hook height (Approx.)  
(Above ground level)

**Max 6.05t**

x3.0m  
Lifting capacity

**7980kg**

Mass of crane

**Max 18.60m**

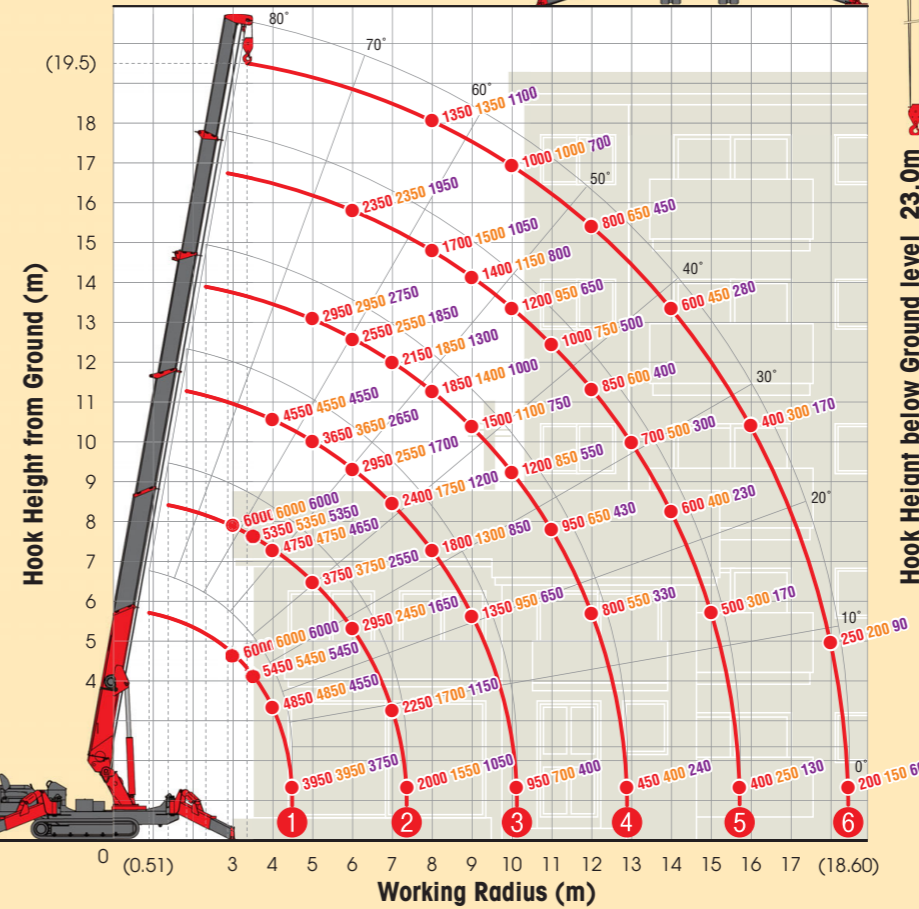
Working radius

Radio remote control

with electric power unit

## WORKING RANGE & NET RATED LOADS (kg)

Outrigger ● Max-extended Mid-extended Min-extended



Automatic stop for overloading (ML-300)



Three colored lamp



Fly jib assembly (Options)



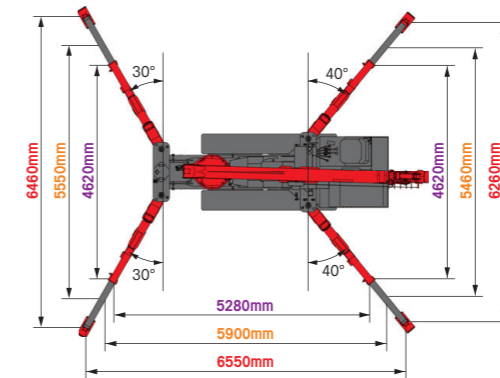
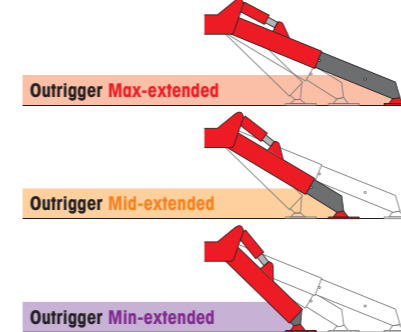
NOTE: Automatic stop for overloading is not available in combination with this Fly jib assembly. For more information, contact your local UNIC distributor.

Length	at 2.11m or of 3.11m
Lifting capacity	Max. 800kg
Tilt angles	0°, 20°, 40°, 60°

## SPECIFICATIONS

Crane model	UR-W706C2
Lifting capacity	Max. 6.05t at 3.0m
Working radius	Min. 0.51m, Max. 18.60m
Hook height (Approx.)	Above ground level: Max. 19.5m Below ground level: Max. 23.0m with 4-part line
Boom	Length: Min. 4.80m to Max. 19.20m Extending speed: 14.40m / 52.0 sec. [with electric power unit] Raising angle / speed: 0° to 80° / 16.0 sec. [with electric power unit]
Winch	Structure: 6-section box beam type telescoping boom Single line speed: 44.0 m/min (at 4th layer) Hook speed: 11.0 m/min (at 4th layer with 4-part line)
Slewing	Range: 360° continuous rotation on a ball bearing race Speed: 2.5 rpm [50Hz] 1.8 rpm [60Hz] 1.8 rpm
Outriggers	Horizontal, Vertical Type: A double acting hydraulic cylinder, direct pushing type (Directly connected with hydraulic automatic lock device)
Hydraulic pump	Rated pressure: 24.5 MPa [250 kgf/cm <sup>2</sup> ] Rated delivery: 81 liters/min Rated revolution: 2500 rpm
Safety devices	Pressure relief valve for hydraulic circuit / Counterbalance valves for boom raising and boom telescoping cylinders / Pilot-operated check valves for outrigger cylinders (Horizontal) / Double pilot-operated check valves for outrigger cylinders (Vertical) / Boom angle indicator with load indicator / Hook safety latch / Automatic mechanical brake for winch / Automatic stop for overwinding / Overwinding alarm / Automatic stop for leaving minimum wire rope / Emergency stop button / Inter-lock device of crane and crawling levers / Inter-lock device of crane and outriggers / Level / Automatic stop for overloading (ML-300) / Digital load meter / Three colored lamp / Headlight / Boom outrigger monitor lamp

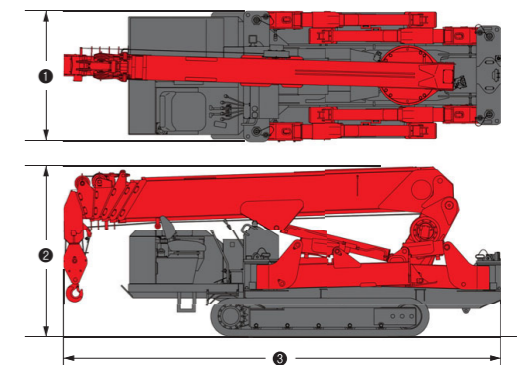
## OUTRIGGER POSITIONS



## CRAWLING GEAR

Crane model	UR-W706C2
Crawling speed	0-2.9 km/h, forward / backward
Hill climbing ability	23°
Tread length	2275mm
Ground contact pressure	43.2 kPa [0.44 kgf/cm <sup>2</sup> ]
Engine manufacturer / model	Mitsubishi / S4L2
Displacement	1758cc
Maximum output	23.00kW(31.3PS) / 2500 rpm, Rated output
Fuel	Diesel
Fuel tank capacity	74 liters
Steering	Hydraulic drive independent of left / right
Starter	Starter motor

## DIMENSIONS



Crane model	UR-W706C2
① Total width	1670mm
② Total height	2185mm
③ Total length	5610mm
Mass of crane	7920kg [8080kg]

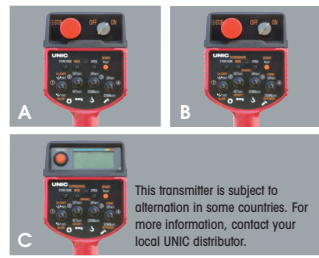
## Electric power unit specifications

Rated power	7.5kW (3-phase 4 poles)
Voltage	AC 200V or 400V (50Hz / 60Hz) 3 phase 4P

\*Not included any cables.

# Standard equipments and Options

# UNIC MINI-CRAWLER CRANE



**1** Radio remote control  
 A W094C, W295C  
 B W376C, W546C, W547C, W706C  
 C W1006C



**2** Cable remote control



**3** Load meter



**4** Digital load meter  
 Load indication is each 20kg (0.02t).



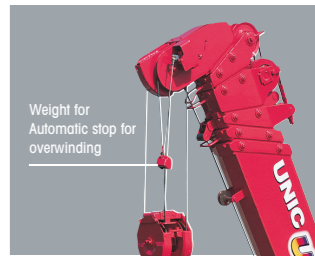
**5** Automatic stop for overloading  
 KM-100 W376C, W546C, W547C



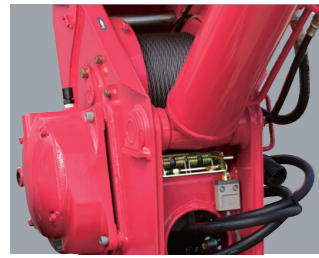
**6** Automatic stop for overloading  
 ML-300 W706C



**7** Safe load indicator



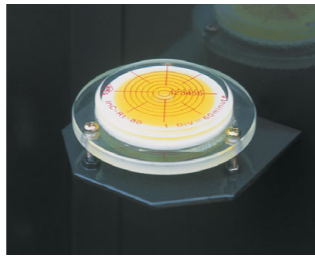
**8** Automatic stop for overwinding



**9** Automatic stop for leaving minimum wire rope



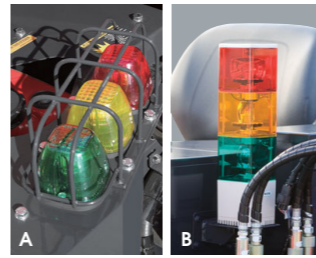
**10** Emergency stop button  
 A W094C, W295C  
 B W376C, W546C, W547C, W706C, W1006C



**11** Level



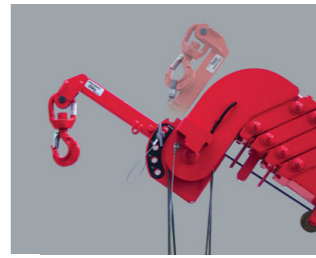
**12** Turn over prevention device



**13** Three colored lamp  
 A W295C  
 B W376C, W546C, W547C, W706C, W1006C



**14** Boom outrigger monitor lamp



**15** Searcher hook assembly



**16** Fly jib assembly



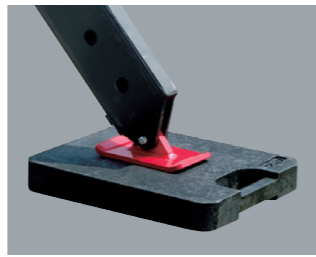
**17** Single line hook



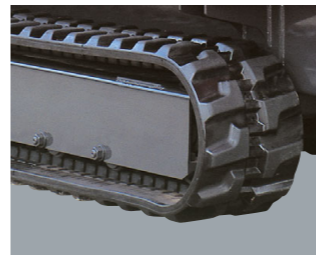
**18** Working light



**19** Headlight



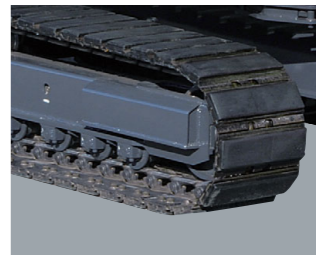
**20** Outrigger mats



**21** Black crawler belt



**22** White crawler belt  
**23** White crawler belt (as spare)



**24** Rubber Pad



**25** 20M cable for motor (200V)  
**26** 20M cable for motor (400V)

STANDARD EQUIPMENTS / OPTION [★ Standard ● Option — Not available]

Crane model	UR-W094C		UR-W295C		UR-W295C1		UR-W376C2		UR-W546C2		UR-W547C2		UR-W706C2		UR-W1006C2		Crane model
	UR-W094CP2E	UR-W295CP2A	UR-W295CP2AM	UR-W295C1A	UR-W295C1AM	UR-W376C2A	UR-W376C2AM	UR-W546C2A	UR-W546C2AM	UR-W547C2A	UR-W547C2AM	UR-W706C2A	UR-W706C2AM	UR-W1006C2A	UR-W1006C2AM		
Engine manufacturer / model	Mitsubishi / GB300LE	Mitsubishi / GB400LE	Mitsubishi / GB400LE	Kubota / Z482-E3B	Kubota / Z482-E3B	Yanmar / 3TNV76	Yanmar / 3TNV76	Yanmar / 3TNV76	Yanmar / 3TNV76	Yanmar / 3TNV76	Yanmar / 3TNV76	Mitsubishi / S4L2	Mitsubishi / S4L2	Yanmar / 4TNV88	Yanmar / 4TNV88	Engine manufacturer / model	
Fuel	Petrol	Petrol	Petrol	Diesel	Diesel	Diesel	Diesel	Diesel	Diesel	Diesel	Diesel	Diesel	Diesel	Diesel	Diesel	Fuel	
Electric motor	—	—	AC 200V or 400V	—	AC 200V or 400V	—	AC 200V or 400V	—	AC 200V or 400V	—	AC 200V or 400V	—	AC 200V or 400V	—	AC 400/400-440V	Electric motor	
1 Radio remote control	★	★	★	★	★	★	★	★	★	★	★	★	★	★	★	1 Radio remote control	
2 Cable remote control	●	●	●	●	●	●	●	●	●	●	●	●	●	●	●	2 Cable remote control	
3 Load meter	★	★	★	★	★	—	—	—	—	—	—	—	—	—	—	3 Load meter	
4 Digital load meter	—	●	●	●	●	★	★	★	★	★	★	★	★	★	★	4 Digital load meter	
5 Automatic stop for overloading (KM-100)	—	●	●	●	●	★	★	★	★	★	★	—	—	—	—	5 Automatic stop for overloading (KM-100)	
6 Automatic stop for overloading (ML-300)	—	—	—	—	—	—	—	—	—	—	—	★	★	—	—	6 Automatic stop for overloading (ML-300)	
7 Safe load indicator	—	—	—	—	—	—	—	—	—	—	—	—	—	—	—	7 Safe load indicator	
8 Automatic stop for overwinding	★	★	★	★	★	★	★	★	★	★	★	★	★	★	★	8 Automatic stop for overwinding	
9 Automatic stop for leaving minimum wire rope	★	★	★	★	★	★	★	★	★	★	★	★	★	★	★	9 Automatic stop for leaving minimum wire rope	
10 Emergency stop button	★	★	★	★	★	★	★	★	★	★	★	★	★	★	★	10 Emergency stop button	
11 Level	★	★	★	★	★	★	★	★	★	★	★	★	★	★	★	11 Level	
12 Turn over prevention device	—	★	★	★	★	●	●	—	—	—	—	—	—	—	—	12 Turn over prevention device	
13 Three colored lamp	—	●	●	●	●	★	★	★	★	★	★	★	★	★	★	13 Three colored lamp	
14 Boom outrigger monitor lamp	—	—	—	—	—	★	★	★	★	★	★	★	★	★	★	14 Boom outrigger monitor lamp	
15 Searcher hook assembly	—	●	●	●	●	●	●	●	●	●	●	●	●	●	●	15 Searcher hook assembly	
16 Fly jib assembly	—	●	●	●	●	●	●	●	●	●	●	●	●	●	●	16 Fly jib assembly	
17 Single line hook	—	●	●	●	●	—	—	—	—	—	—	—	—	—	—	17 Single line hook	
18 Working light	●	●	●	●	●	●	●	●	●	●	●	●	●	●	●	18 Working light	
19 Headlight	—	—	—	—	—	★	★	★	★	★	★	★	★	★	★	19 Headlight	
20 Outrigger mats	●	●	●	●	●	●	●	●	●	●	●	●	●	●	●	20 Outrigger mats	
21 Black crawler belt	★	★	★	★	★	★	★	★	★	★	★	★	★	★	★	21 Black crawler belt	
22 White crawler belt	●	●	●	●	●	—	—	—	—	—	—	—	—	—	—	22 White crawler belt	
23 White crawler belt (as spare)	●	●	●	●	●	●	●	●	●	●	●	●	●	●	●	23 White crawler belt (as spare)	
24 Rubber Pad	—	—	—	—	—	—	—	—	—	—	—	—	—	—	—	24 Rubber Pad	
25 20M cable for motor (200V)	—	—	●	—	—	—	—	—	—	—	—	—	—	—	—	25 20M cable for motor (200V)	
26 20M cable for motor (400V)	—	—	●	—	—	—	—	—	—	—	—	—	—	—	—	26 20M cable for motor (400V)	